

60 PAGES OF INSPIRATION

BAND SAMILLS, CHAIN SAWMILLS AND PLANERS

LOGOSOL NEWS

A MAGAZINE FOR US WHO LOVE WOODWORKING. SAWING, PLANING AND BUILDING

LOGOSOL NEWS is for anyone interested in woodworking. The magazine is published by LOGOSOL. Read more news and articles on woodworkingproject.com.



woodworkingproject.com



LEADER

Lift your project with the right equipment!

In this fully loaded magazine, you get to meet some of our customers from around the world. Customers who have built everything from rustic furniture to houses and customers who have taken their businesses to new heights with the help of our machines. What we have in common at Logosol is that we love the freedom, the quality, and the satisfaction of sawing our own wood!

You will get to know Logosol and our product range of chain sawmills, band sawmills and planers that we have been creating, building and selling for over 30 years.

YOUR INTEREST - OUR EXPERTISE

Since you downloaded this magazine, perhaps you're curious about getting your own sawmill or planer. You can confidently choose Logosol when you are going to work with wood. Every day we talk to customers all over the world who use our machines in their businesses or for building and renovating. After more than 30 years in the industry, we have both the knowledge and the product range that is required for you to get the maximum benefit from your investment.

The equipment you buy from us today can be sup-

plemented with other machines, and easily be upgraded with new modules and attachments as your business grows.

PEACE OF MIND

Your equipment is covered by a peace-of-mind guarantee that includes generous warranties and support from skilled technicians. Our main concern is that your machine is safe and works perfectly. Logosol's products have proved to have a very long life. This makes your purchase more economical.

Please visit the Logosol website logosol.com for more information on products, warranties and shipping. We are active on Facebook, Instagram and YouTube. You are very welcome to follow us there!

Many have discovered that their own wood processing is a great way to take advantage of what you have, as well as an opportunity to use your creativity to build and create in wood. You also invest in a lifestyle that is not only sustainable and economical, but also really fun!

Warmly welcome to Logosol,
**BENGT-OLOV BYSTRÖM, KATARINA BYSTRÖM,
MATTIAS BYSTRÖM & ROBERT BERGLUND**

LOGOSOL NEWS is a magazine dealing with small-scale wood processing and forestry, published by LOGOSOL AB.

 **LOGOSOL**

Production: LOGOSOL AB
Advertising: Katarina Byström +46 611 182 85
Website: Visit our website with updated news and videos all year round: www.woodworkingproject.com

**HUNDREDS
OF ARTICLES
AVAILABLE AT
WOODWORKING
PROJECT.COM**

With Customers & Quality in Focus

Logosol's production has purposefully invested in quality and efficiency. Now we offer immediate delivery of many of our sawmills. Logosol News spoke with Logosol's Board Chairman Mattias Byström about the philosophy at Logosol.

"Logosol is a strong and reliable company," says Mattias. We know that our customers are satisfied with both their machines and with our customer service. Having the entire company under the same roof, everything from product development to production gives us the opportunity to ensure quality at all levels. All of our machines are set up outside our head office and we use them to saw and plane several times a week. The fact that we use the machines ourselves is an important part of being able to give customers knowledgeable support and to guarantee the quality of our products.



100

...Live Demos Logosol will record this year.

55

...people working at Logosol in Härnösand.

34

...years since Bengt-Olov Byström started Logosol.

+60%

...more people choose to shop in Logosol's web store, + 60 %

100K

..100 000 subscribers to Logosol's YouTube

Calculate what you can save from sawing your own timber!

Sawing your own timber is profitable, and if you saw timber for a construction project, you'll almost always earn back your investment. You can saw about two cubic metres of mixed timber per day with our F2 and F2+ chain sawmills, and even more with a band sawmill. Expect a saw yield of at least 50%. That means that you will need about four cubic metres of timber per day. It's difficult to calculate the cost of raw materials because so much depends on how you procure your timber and where you live.

In Sweden, you can expect to pay €50 per cubic metre. That gives you a raw material cost of €200. What it costs to saw two cubic metres of timber largely depends on the volume of timber you saw. As for the service life

of a sawmill from Logosol, you can expect it to be around for a very long time. Logosol started its business more than 30 years ago. We're still in touch with customers who bought their sawmill several decades ago – sawmills that are still operating at full capacity.

In this example, we calculate €50 per cubic metre of sawn timber for depreciation, cutting equipment, oil, petrol or electricity.

Two cubic metres of sawn timber currently costs between €1200 and €1600 per cubic metre at the lumber yards in Sweden (October 2022).

With these figures, you can make the following calculation.

Raw material cost: €200 for 4 cubic metres of timber gives 2 cubic metres of sawn timber.

Other operating costs: €50 x 2 =



€100 for 2 cubic metres of sawn timber.

This means that you earn at least €1200-€300 = €900 for one day's work and 2 cubic metres of high-quality lumber.

Virtually whatever values you insert for operating costs, timber costs and the investment in a sawmill, the results are extremely profitable. This calculation shows that your daily earnings will be impressive. It also appears to yield a profit even if you purchase timber for sawing.

• **Footnote:** This calculation example is based on prices in Sweden in October 2022.



THE QR CODE TAKES YOU TO THE RIGHT PLACE AT ONCE

On these pages, you will see QR codes here and there. On newer mobiles, point the camera to the code to come to the right place at once. On older mobiles, you need a special QR reader app, for example "QR Reader for iPhone" if you have an iPhone and "QR Code Reader" for Androids.

FIND MORE INSPIRATION FROM LOGOSOL HERE!



Logosol
Portable Sawmills



@logosol_
portable_sawmills



Logosol
Portable Sawmills



logosol.com/
store/newsletter



World Class customer care



Feel secure with a market leading company that has long experience. We have sold over 30 000 sawmills and more than 10 000 planer/moulders.

We have over 30 years' experience of small-scale wood processing and are known for our thoughtful customer care. We will take care of you and your machine.

60 DAYS MONEY BACK GUARANTEE

Logosol is the right choice, even when you choose wrong. We give you a two-month money back guarantee on all machines. You can test whether the machine meets your requirements before you make your final decision. Saw or plane a good deal of timber to see if the machine works as you expected. We are not afraid of taking back a machine with a little sawdust on it. As a customer, you only pay for the costs of return shipping. Cutting equipment

and other consumable items are not covered by the money back guarantee. If you want to return a product, please contact us and we will help you.

2-YEAR WARRANTY

Logosol gives you a 2-year warranty on all machines. The warranty covers manufacturing defects and problems that have occurred during normal use of the products. Exceptions to the warranty are consumable items such as belts, guide bars and saw chains.

We always try to be really fair and helpful, should a problem occur. We are sure that in the long run it pays best for everyone if you continue to be completely satisfied with your Logosol machine.

CALL OUR SUPPORT!

Get access to over 30 years of experience in small-scale wood processing. We give you unlimited support when it comes to knowledge and product use. We take care of the service of our products ourselves, and we answer your questions by phone every week-

day from 8:00 pm to 4:00 pm. We can solve most problems by phone. You can also receive support via email.

MACHINES WITH GROWING POWER

We know our products are good, and we want you to be happy with your purchase for the rest of your life. When investing in our products, you can be sure that you get the highest quality equipment, designed specifically for the task at hand. We strive to build products that are flexible and easy to extend and expand. The advantage of Logosol is that you can start with a simpler product and as your needs grow, you can easily replace or upgrade the product – without losing the value of your original investment.

TENS OF THOUSANDS OF HAPPY CUSTOMERS

We who work at Logosol, love to see how people use our products. When customers call and enthusiastically tell us about their projects, we immediately have something to brag about at the coffee break. It is fantastic when cus-



tomers, who made their purchase 30 years ago, call and tell us about how they still look forward to the first saw cut every spring. It is amazing to think about all the businesses that have been built up with the help of our machines. Every single story makes a lasting impression and is reason enough for us to continue developing awesome products and create valuable relationships with our customers.

6 REASONS TO CHOOSE LOGOSOL WHEN BUYING SAWMILLS AND PLANERS!

- 1 OVER 30 YEARS' EXPERIENCE**
We have sold over 30 000 sawmills and more than 10 000 planer/moulders. We have over 30 years' experience of small-scale wood processing.
- 2 BEST AT SAWMILLS!**
We are a complete supplier that develops both chain sawmills and band sawmills. This is a unique combination that gives us tremendous benefits in our product development
- 3 BEST AT PLANER/MOULDERS**
No other manufacturer in the world knows so much about both sawing and planing. When you want to develop your business or hobby, Logosol is your perfect partner.
- 4 STRONG CUSTOMER COMMUNITY**
There are customers worldwide, who build their dreams out of wood with the help of our machines. Our community spans the globe with the help of groups on social media and customer events in different forms.
- 5 INNOVATIVE WITH EXTENSIVE EXPERIENCE**
With over 30 years of experience and a constant aspiration for improvements, we develop machines on a new level with hard selection processes for every detail. As our customer, you can feel secure with your Logosol machine and concentrate on having real fun when creating with wood!
- 6 TENS OF THOUSANDS OF HAPPY CUSTOMERS**
We receive a lot of positive feedback for our customer care. But we want to turn it the other way round. Logosol probably has the nicest and most inspiring customers. With our clientele, it is easy to become the world's best in customer care!



Oversized timber gives the alpine hotel a unique profile

In the middle of the Austrian Alps, Huwi and Renate Oberlader have created a personal and exclusive type of accommodation that stands out. Their hotels, villas and restaurants, built entirely of stone and recycled timber, attract visitors from all over the world. A Big Mill from Logosol has played an important role in the project.



Huwi and Renate Oberlader are hoteliers and entrepreneurs, deeply rooted in the Austrian Alps. With a passion for outdoor recreation, design and natural materials, they have succeeded in creating a modern concept where the city meets the rural landscape, without stumbling upon any exaggerated alpine clichés.

DESIGN CONSIDERING THE NATURAL SHAPE OF THE WOOD

In Leogang, a small alpine village with downhill skiing and cycling, right between Kitzbühel and Salzburg, they have built up an exclusive hotel, Hotel Mama Thresl, aimed at a youthful and active clientele.

The Oberladers have consistently managed to combine natural materials with modern design. A three-storey building with a construction of concrete and solid wood and a façade of larchwood that can accommodate 50 rooms, some of which have their own sauna.

The visitor is greeted both inside and outside by a – frequently used – climbing wall that stretches from floor to ceiling. Inside, wood – recycled,

wide and untreated boards – is the dominant material in walls and floors. Larch, oak, ash, pine, alpine spruce... In tasteful combination with glass and rough natural stone always taking into account the natural shape of the wood.

BIG MILL FOR SAWING OVERSIZED TIMBER

A portal made of wood frames the entrance, the reception desk consists of a large log several meters long. Furniture and decorations, restaurant, terraces and relaxation – all in breathing wood that has had to age slowly in peace and quiet.

The same concept in terms of building materials and design applies to the small village, Bergdorf Priesteregg, consisting of 16 greyed villas that are rented out to more mature visitors with high demands on tradition, convenience and privacy. “Luxury primitive” is a description that likes to pop up...

But to succeed in their mission, Huwi and Renate have been in need of wood and tools. Therefore, in the run-up to the planning of new projects, Mattias Band at Logosol in Germany



received a request for suitable equipment to cut out wide slabs from large logs of high-grade deciduous timber.

Mattias offered to deliver everything on site and loaded a Big Mill with an electric motor and a two-metre long bar on the car. He was also asked if he was able to assist with the assembly of the sawmill and that the buyers got started with the sawing.

“Everything worked according to plan,” says Mattias. The logs were sawn and the customer was satisfied. Now all that remains is to wait for new hotel projects to begin.



• Alpine timber sawn on our Big Mill is so smooth it almost feels planed.



• The wide slabs then turn into unique hotel furniture.



• Many of the carvings are crafted by hand, giving them their special character.



• Renate and Huwi Oberlader pictured with a freshly sawn table top.



• An extraordinary conference room with swings and a rustic play on modern furniture. A beautiful space for creative meetings!



• Limitless, playful and imaginative.



• The interior of the hotel is just as extraordinary as the exterior. Different types of wood are mixed stylishly.



• Stone meets wood in this stylish bathroom. The rustic design is seen throughout with fantastic results.



• Book this room for an enchanting getaway. A room with a view of the beautiful surroundings.



• A closer look at the amazing bathroom furniture.

LOGOSOL BIG MILL wide slabber

For the largest of logs

- ✓ Saw valuable wide slabs. You quickly make up your investment.
- ✓ Now you can easily produce wide, live-edge boards from various fine woods.
- ✓ Handles extremely big logs with excellent precision.



Scan the QR code and watch our great Live Demo videos about the LOGOSOL BIG MILL





• April is excited about her chain sawmill and sees great advantages of a portable sawmill.

PHOTO: JUSTIN MABIE

Creative joy that encourages others



April Wilkerson



wilker_dos



Wilker Do's

On her “merch” (T-shirts and sweaters) you find the messages: “Get to it”, “Dirty hands - Clean money” and “Pretty Tough”. Those statements also apply to this high-producing influencer, whom we at Logosol are proud to call one of our ambassadors.

April Wilkerson works hard. She produces on a professional level and radiates a creative joy that is contagious. In 2013 she had never used a power tool. Now, seven years later, she has over a million followers on her YouTube channel.

“My motto is that everything I need at home, I build myself,” säger April. This has resulted in nearly 250 instruction videos about everything from a chicken coop, an electric guitar, an entertainment centre, a workbench, to a giant band sawmill.

When she received a Logosol F2+,

she luckily liked it so much that she skipped trying to build one herself.

“I like my home-made band sawmill, but it isn’t portable. Sometimes it is easier to bring the saw to the logs than the logs to the saw,” she says in her video about her first saw cut with the F2+.

Unpacking and assembling were done in the blink of an eye, just like everything else she does. Already in her next Instagram story, she was up and running, filming her first saw cut.

“It runs like a dream,” she says with a big smile. In the video, we can

watch April sawing Mesquite*. It is a hardwood, but the saw cuts through the log quickly.

“The cut becomes incredibly smooth and straight,” she answers a follower on Instagram, who wonders what the saw cut was like.

If we know April right, she will probably use these beautiful boards in a future DIY video. We are eagerly looking forward to following her coming projects with this sawmill.



• The sort of wood April cuts here is called Mesquite and it only grows in the southeastern United States and Mexico.



LOGOSOL F2+ chain sawmill

Extra robust for larger logs

- ✓ A light, strong and maintenance-free sawmill that you will really appreciate. Many smart & patented functions.
- ✓ The world's most versatile sawmill. Extend, expand and adapt to your needs.
- ✓ Addictive! You're quick to get underway and once you start, you can't stop. Your sawmill will be a joy for you and your family for generations to come.

Scan the QR code to watch videos and get more information about the product.



SWEDEN, MELLERUD



The road from longing *to moving in*



With the goal of building as cheap, locally produced and environmentally-friendly as possible, the Ribacke-Sandberg family has realised their dream of a house of their own. Their own land, own sawmill, own machinery and own work has been a prerequisite. In autumn 2010 planning permission was granted, and by autumn 2014 it was time to move in.

Henrik Sandberg has been raised to stand on his own two feet. Simply muttering “I can’t do it” does not feature in his vocabulary.

“What you can’t do,” he assures, “can always be learned.” A cliché like “difficulties are there to overcome” is for him an obvious formula for life.

And with a wife who also does not hesitate in the face of new and unknown challenges, the family’s house building, dubbed “Project Longing,” has become a reality.

It was not long afterwards that sweet music had arisen between Henrik Sandberg, self-employed and a saw-

mill owner just south of Mellerud, and Erika Ribacke Sandberg, a children’s librarian from Valbo outside Gävle, as the idea of a house of their own was born. But buying a turnkey house was not an option. And since Henrik had his own land and his own sawmill, with a Logosol planer moulder included in the machinery inventory, he had all the prerequisites for building himself.

“We drew and drew,” Erika says, lifting her newly awakened son Valter, 1½ years old, out of the pram. “Many hours were spent in front of the computer and many sketches ended up in the trash before we figured out how

TEXT: MATS WIGARDT | PHOTO: BOSSE LIND



• A freestanding bathtub on the oak floor of the bathroom that has been oiled, waxed and seamed.



• The kitchen has been given cupboard doors of birch and shelves and worktops of elm and oak.



• The doors to the bedrooms and bathroom come from old outbuildings.

our house would be.”

And now, almost seven years after the planning permission was granted, we are sitting in the cosy kitchen of the family house. Through the windows we see birch groves and corn fields and a blue sky. It is homely and pleasant with many unique details that can not be found in any catalogue.

OWN CONSTRUCTION BLOG

In her own blog, Erika has talked about the project, about the ups and downs, from foundation and casting to raising the foundations, framework, roofing and kitchen. All the timber except the windows, front doors and kitchen frames, has been sawn and planed in his own sawmill, Bysågå, which Henry took over from his father.

Outside, the house measures 8 x

12 meters, which gives a living area of 150 sqm, distributed over two floors. During the course of the work, various solutions have been compromised, twisted and reversed, always with the environment in mind, all according to the formula of cheapest, best, most environmentally friendly. This has involved, among other things, a lot of wood, without plastic or unnecessary plaster, taps without heavy metals, solar panels, separating toilets where urine is used for fertilisation and the faeces turn into soil.

“And we have done practically everything ourselves, with the good help of relatives and friends,” says Henrik.

He talks about the rough oak floor that he himself sawed and planed, about the six meter long 8 x 8 inch rafters taken from his own forest,

about struts and the fine staircase with unedged steps, about countertops and drawer fronts, about mouldings and details selected and worked.

“All the time left over after Erika’s full-time job and my own half-time job has been spent on the house,” he says. “Costs for purchased materials have stayed below SEK 600,000, but we have not included the value of our own work. It’s taken us four years to finish it.”

A REAL DREAM HOUSE

We take a look around what must rightly be regarded as a dream house. The heating system is a mixture of wood and sun, with insulation of cutter shavings from their own planer.

The kitchen is an easy to work

Continued on next page...



• A lot of oak has been used for the details. “It’s a hard wood and wears down the planing knives, but it’s worth the effort,” Henrik Sandberg says.



• Close-up of a staircase railing in beautiful oak.

dream with beautiful cabinet doors of birch and practical shelves of elm and oak. In the laundry room and bathroom, the oak floor has been oiled, waxed and seamed, and in the shower you stand on a stainless steel plate that extends partly up the wall.

“We have used a lot of oak for details such as stair railings and mouldings,” says Henrik.

“It is a hard wood and wears down the planing kives, but well worth the effort.”

Upstairs there are high ceilings, with struts and roof construction visible. Much of the wood has been treated with egg oil tempera in peaceful colours, using eggs from their own chickens which are visible tripping around in the chicken coop under the birch plantation.

We carry on full of wonder. Henrik keeps his musical instruments in the study. In addition to driving trac-

tors, sawing planks and digging optical fibre cables, he is also part of a frequently hired rock and dance band.

Rough outbuilding doors have been transformed into exciting doors to bedrooms and bathrooms. The sloping roof makes for innovative storage spaces. A freestanding bathtub dominates the space in the bathroom from where you can lie and look out over the sky.

“Erika has seamed the floors both here and in the laundry room,” says Henrik. “She has the patience and accuracy required for it to be good enough.”

Externally, the house is covered with untreated spruce and pine that has begun to adopt a pleasantly greyed colour scheme. The laths are planed with the four-sided planer. Corners, barge boards and other details have been painted in red calcimine paint. The garden features a water lily pond

with a small bridge and carp swimming in the water.

THE PLANER MAKES THE MONEY

On the other side of the road is the sawmill started by Henrik’s father and where Henrik himself since 2005 has been sawing and planing products to order. He bought the planer from Logosol in order to offer further processed products.

“It’s the planer that creates the revenue,” says Henrik.

“It is easy to adjust and gives good results. I can offer many different profiles and there’s no shortage of work, even if my own house is now ready.”

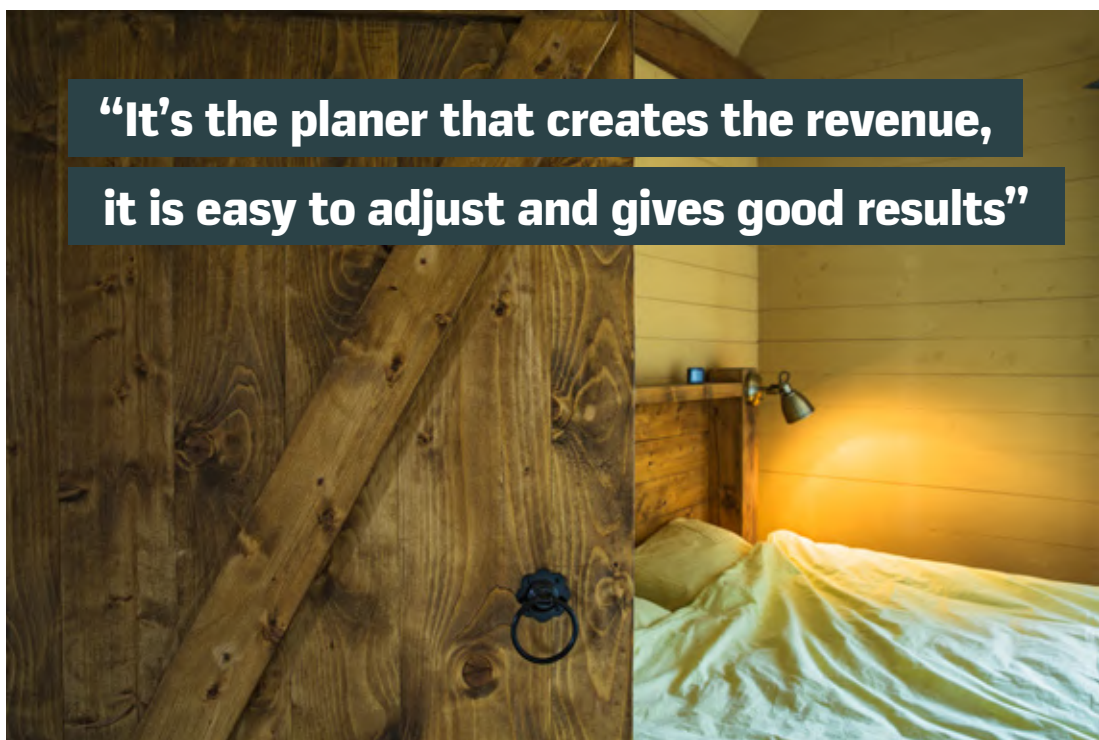
As time becomes available, the family has more construction projects in the pipeline. A simple storage room has already been erected, additional outbuildings and a carport are on the wish list.



• Sandbox with accompanying parasol for his son Valter.



• Project Longing began as a dream. Today, the Ribacke Sandberg family lives in their own paradise, which they themselves designed and built. Their own machinery and their own work has been a prerequisite to succeed with the project.





• The red colour is repeated in many of the beautiful carpentry details.



• A home made sign shows where the local mill can be found.




Facts: PROJECT LONGING

Dimensions and materials: Wooden house in 1 ¾ storey, floors, 32 degree roof angle, outer dimensions 12 x 8 meters. Untreated cladding. Built on bedrock, with a warm croft foundation.

Climate system: Natural-draught. Preheated inlet air in winter. Heat from a baking oven in the middle of the house connected to the accumulator tank and solar panels on the roof. Triple glazing.

Interior: Open plan flooring, open ridge in the living room. Exposed beams and posts. Solid floors of oak, plain tongue and groove on walls.

Building blog: www.nogg.se/projektlangtan




Welcome to the WORLD OF LOGOSOL

WITHOUT
COST!

SIGN UP NOW! YOU'LL GET ALL THIS WITHOUT COST:



INVITATIONS TO EVENTS

On several markets we have regular events to show new products and other fun things!



SPECIFIC OFFERS

Receive offers and product news.



THE LOGOSOL NEWSLETTER TO YOUR INBOX

Read more about new products, smart tips and offers. We send about one email per month.



WIN LOGOSOL MERCH!

Participate in fun contests and win smart products and stylish Logosol merch.



APPEAR IN LOGOSOL NEWS OR ON LOGOSOL SOCIAL MEDIA

In our digital newsletter, we often look for specific projects that we would like to share with more customers.



INFO ABOUT TRADE SHOWS & COURSES

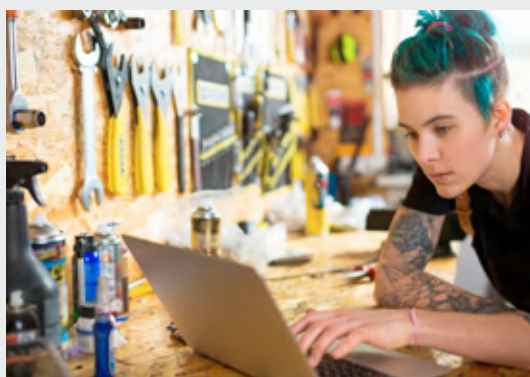
We invite you to trade shows and fun training courses in wood processing.

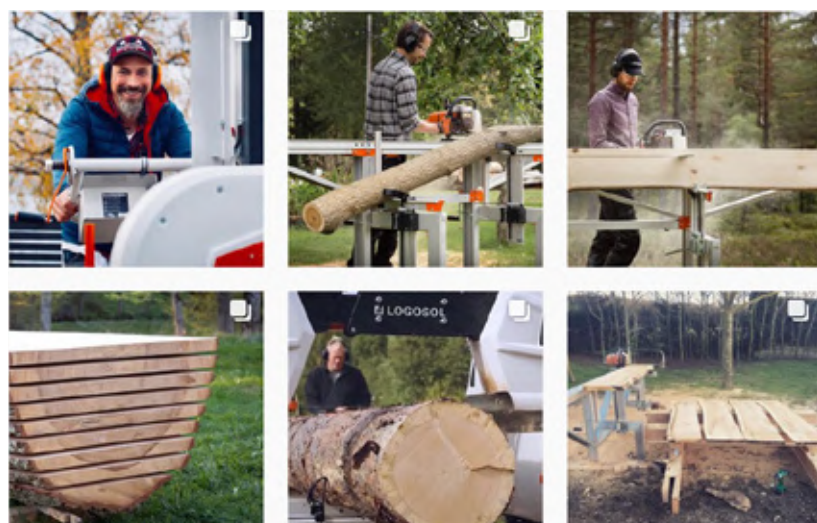
HERE'S HOW YOU DO IT! You are welcome to leave your email address. Signing up is super easy. Scan the QR code or visit www.logosol.com and click on "My account" in the top right corner. Remember to tick that you want our Logosol newsletter so you don't miss anything.

Welcome!

/Logosol

P.S. Of course, it is easy to unsubscribe from our emailings if you would like to.



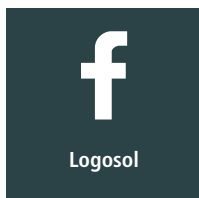


NEWS FIRST ON FACEBOOK

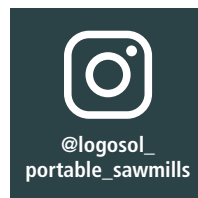
Follow Logosol on Facebook and get the latest news about trade shows, courses, videos and really great deals! On Logosol's Facebook page we mix offers, product news, videos, glimpses from Logosol as a workplace and a lot of interesting reading about wood processing. We feature new posts almost every day. This is where you get to know the latest first!

BE INSPIRED ON INSTAGRAM

Follow Logosol on Instagram and see inspiring sawing pictures and incredible wooden construction projects from all over the world! Here you can find inspiration for your own projects, unique solutions and cool results. On Instagram, the key words are inspiration and creativity. There's a huge flow of DIY, construction projects and interior design no Logosoler should miss!



Open your mobile camera and point it here and you'll be taken directly to Logosol's Facebook page.



Open your mobile camera and point it here and you'll be taken directly to Logosol's Instagram page.



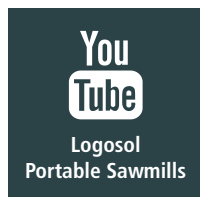
LEARN HOW TO SAW ON YOUTUBE & LIVE DEMOS REGULARY

Logosol has its own YouTube channel where our videos at the time of writing have been viewed 12,396,913 times! See news, presentations of new products and reports.

The channel is called Logosol Portable Sawmills and has over 100,000 followers.

We have Live Demos regularly with product demos, Q&A, building projects, sawmill competitions etc. Don't miss out!

Welcome!



Open your mobile camera and point it here and you'll be taken directly to Logosol's YouTube channel.



• Ferry Svan impressed with his awesome technique as guests from all over the world gathered at Logosol HQ.

World-class Wood Workers visit!

At Logosol's regular World Meeting, staff, dealers and ambassadors meet at Logosol's head office in Härnösand!

Guests from 18 different countries come together to see, socialize and learn more about Logosol and their products. The row of flags below represents the different nationalities of our guests.

FERRY SVAN DEMONSTRATED UNDERHAND CHOP

Out in the demo area, all the sawmills and the CH3 planer were lined up and everyone who wanted to had the opportunity to do some sawing and planing. Also present was Ferry Svan who, given his great success at Stihl Timbersports, certainly knows how to handle both a chainsaw and



an axe. He demonstrated his approach and technique in the discipline of the underhand chop, which involves chopping a hefty log in half using an axe in the shortest possible time. Once he got going, you had to pay attention. It took only a few seconds before the log was in two pieces.

During the meeting, all the guests had a chance to speak to the different departments at Logosol. Many were impressed by Logosol's factory and our efficient and professional production of sawmills and planing machines. One of them was André Brockschmidt from Bauforum24, a large German machinery community which tests and reviews different products. André had recently tested Logosol's F2+ chain sawmill and was very pleased with the product.

"I'm generally very impressed with Logosol's products and the fact that it's a family-owned company with its own factory. I'll be leaving the meeting in a very positive mood," André says.

PROFESSIONAL ADVENTURERS WITH THEIR OWN SAWMILL

A number of guests travelled a long way to attend the meeting; but among

those who had travelled the furthest were Kielyn and Dave Marrone, who run Lure of the North, an adventure company. They take their clients on spectacular trips into the Canadian wilderness. Kielyn appeared in the TV series *Alone* in which she survived for 80 days alone in the wilderness with only a few items to help her.

"It's been an absolutely fantastic weekend and incredibly fun to meet the people behind the machines we use. Everyone has been warm and friendly and we're impressed by the focus on quality at all levels and the product development," says Kielyn. With their F2+ chain sawmill, the Marrones have big plans to build cottages and other things for their company.

A boat trip along Sweden's High Coast took the whole group up to beautiful Björkudden and on the way Fresh Cut got the chance to speak to Fredrik Forssberg, CEO of Logosol.

"It's my first time attending a Logosol World Meeting and I have to say that I feel incredibly proud to be a part of this group. Everyone was incredibly motivated and inspired and I've made many new friends in the past two days. I'm already looking forward to the next meeting!"



• Viktoria Carstens is a professional tree climber, forest technician and chainsaw professional. She is an ambassador for Stihl and inspires her many followers on Instagram. Here she tries out the newly developed remote feeding for chainsaws.

 **viktoriacarstens**



• Kielyn and Dave Marrone, who run Lure of the North, adventure company, are experienced adventurers and sawmill owners.

 **Lure of the North**

 **Lure of the North**



• Many meetings, discussions and exchanges of ideas took place during the Logosol World Meeting.

 **lureofthenorth**



• Graham Andrew and Daniel Olsson from Ravenwood.se and Nick James from Nick James Design watching the F2 demo. Graham and Daniel use the Big Mill to take advantage of large trees in urban environments and build fantastic benches and tables. Nick is a skilled craftsman who uses his F2⁺ chain sawmill to produce materials for his woodcraft projects.

 **nickjamesdesign**

 **ravenwoodcreations**

Colm makes merchandise for arborists and wood workers

Colm Hickey is a multi-tasker extraordinaire. He's an arborist and axe maker who owns a company that offers merchandise to arborists and wood workers. He creates amazing illustrations that always feature an element of humor.

Check out the cool Logosol T-shirt he made featuring a B1001 band sawmill transformer.

 **colm.champ**
arbfiction

 **Colm Hickey**



• Colm with Logosol's Irish retailers Roland Flower and Eoin Murtagh.



• Arbfiction's B1001 Transformer design.



German Tom Siesing loves wood

Tom Siesing is a true wood enthusiast and he creates amazing construction projects in the forest with his F2⁺ chain sawmill. He shows how he builds incredible wooden houses and other buildings out in the forest. If you love wood like we do, one tip is to follow @tomsiesing on Instagram and Facebook, as well as on his YouTube channel Tom Siesing. Check out how he uses the sawmill to fulfill his dreams of wood!



 **tomsiesing**

 **tomsiesing**

 **Tom Siesing**



Peter Saws Without His Own Forest

At Ljungan, just east of Ånge in the village of Hallsta, is Peter's house.

"It is an old stable that has become a summer cottage, which I intend to renovate into a year-round residence. I like to build things and fish. "The fact that the cabin is in Ljungan is just perfect," says Peter.

The renovation project consists of building a bedroom and bathroom as well as changing the flooring to wedge-sawn pine floors.

"You often see wedge-sawn floors (kilsågade) made with boards that have not been edged but has the bark removed, in old Swedish houses. It is probably because you can get the most out of the log with that technology," says Peter.

BOUGHT AN F2+ FOR HIS RENOVATION PROJECT

The materials for the floor renovation was originally intended to be made with planks sawn at the village saw. But the dried pines that would become planks were not allowed to be sawn there. Peter then decided to saw them himself on an F2+ chain sawmill from Logosol.

"By sawing lumber yourself, you get the opportunity to produce wide planks which is really cool," says Peter.

Over the years, Peter has offered to take down trees for friends and acquaintances. By doing this, he has accumulated enough pine for his flooring.



- "Just throttle the saw and smile," Peter cheerfully says from the saw in Hallsta

"It's great to have a sawmill, even without your own forest," says Peter.

ACCUMULATED WOOD FROM NEIGHBORS AND ACQUAINTANCES

Peter does not own his own forest, but he has cut down trees on his own property and gotten free lumber from his neighbors. He has cut the trees himself as he recently acquired a chainsaw driver's license.

"I have felled around 15 aspens on the farm, which will become planks for an extension of the house. Now I call the place "Aspudden" (a suburb of Stockholm- "Aspen Peninsula"), a nod to my time in Stockholm," says Peter.

"I learned that log handling is really crucial. It's important to plan well when you don't have machines to lift with. The sawing itself is quite simple, just throttle the saw and smile," Peter says and laughs heartily.

Three advantages of the F2 chain sawmill



✓ Easy to transport, store and maintain. Durable, dirt-repellent surface. It never rusts.



✓ Easy to set up. It cuts timber just as well out in the woods as at home in your backyard.



✓ Ideal when you want a simple solution without compromising with the result.



9 REASONS TO CHOOSE LOGOSOL'S CHAIN SAWMILLS

- 1** A saw carriage that slides perfectly on the guide rail, and is prepared for bar nose steering and vibration-damping feeding crank.
- 2** Exclusive and durable surface finish. It never rusts and is dirt-repellent. Can stand outdoors all year round.
- 3** A smart ratchet system with clear scales gives quick and exact height adjustments.
- 4** The sawmills are built of a smart module system and can be extended and upgraded when required.
- 5** Strong locking of the guide rail sections facilitates assembly and gives increased stability.
- 6** Under the guide rail, there is a horizontal, easygrip carrying handle that facilitates lifting the sawmill.
- 7** Two unique log clamps secure the log firmly. They are included as standard.
- 8** The distance between the guide rail and the log enables you to cut knotty and crooked logs without problem.
- 9** Impressive accuracy. Exact height adjustment gives your timber the right dimensions every time.



• With our own sawmill on the homestead, there is plenty of leftover lumber.



• Peter sorting the different dimensions in the wood storage.





Construction Dreams Become a Reality with Logosol's Band Sawmill

The Pettersson family just outside of Åmål are what you might call big users of Logosol products. During the construction of his new house, Anders Pettersson sawed 5,500 running meters with Logosol's Bandsaw B751 and ran parts of it in a planer from Logosol.

Anders went to forestry school in Dals Ed in the 80s and then worked in forestry for 6–7 years. He then changed his profession, but continued to farm his own forest. The family's farm is called Kesebol and consists of 150 hectares, of which 120 are productive forest land. The house that Anders is in the process of completing is 125 square meters and is beautifully located on a hill with a fantastic view of Hultsjön.

"All of the wood for the house, except for the beams for the roof, has been sawn with the B751 from Logosol. There has been 60-70 wind-falls from our forest property in the past year alone," says Anders.

FOUR LOGOSOL MACHINES ON THE FARM

Anders had a chain sawmill from Logosol for 7 years before he switched to

the B751 Band Sawmill in 2019.

"With our planer from Logosol, we have, for example, planed siding, joists and also planks for the deck," says Anders.

Naturally, owning your own sawmill and planer is very handy when building and renovating. When the joists and the roof were up, the freshly sawn facade was nailed up in the autumn of 2020 and finished in the spring, when it had completely dried. During the spring and summer, Anders and the family worked on the interior and installed windows.

SUPER EASY TO GET THE RIGHT DIMENSIONS

Anders talks about how handy it is to be able to cut to one's own dimensions for the house.

"I have sawn many different dimensions of lumber for different parts of

the house."

The next page shows the impressive list of construction timber that the Petterssons easily sawed according to their own wishes and needs. This is something very easy to achieve with your own sawmill.

LOTS OF PROJECTS WITH SELF-SAWN WOOD!

In addition to the residential building, the family has built a large saw house on a concrete foundation with storage and an extension to Tomas' (son) house, two lean-to shelters and a wood-fired hot tub.

"With your own sawmill, you have the opportunity to produce exactly the materials you need. There are always building structures that need to be fixed and new construction projects to tackle."

"It's fun to saw and build together", says the Pettersson family, who together have created buildings that will bring pride for generations to come.



• Tomas, the son, has sawn wood for his extension with the B751.



• Solid support lines sawn to the foundation of the house.



• Anders sawed all the wood for the house himself, except for the beams



• Anders sawed around 5,500 running meters of timber for the house construction. With current lumber prices, the stacks of lumber in the picture represent quite a bit of money.



• From the house, you can enjoy the fantastic view of Lake Hultsjön, outside of Åmål.



• With a sawmill on their farm, there will be a lots of construction! A grand lean-to shelter brings great joy to the Pettersson family. Below: The practical saw house is cleverly designed. It is easy to access and load new logs.





• A log wagon loaded with possibilities!
Below: A satisfied Logosoler in the sun!



• Anders and Carina next to the view of Lake Hultsjön.

THE PETTERSSON FAMILY LUMBER LIST

- Floor beams in heartwood, double 6x8 inches (6x16, 150x400 mm) dried for 5 months
- Floor joists, 2x8 + 2x4, 630 cm
- Walls 2x7 + 2x2 inside and outside
- Spikläkt till brädfodring 1,5x3
- Horizontal wall siding 1x8, moulded to tounge and groove
- Roof batten 1x4, split into 1x2
- Beams for other projects. All in heartwood.
- Beams for father in law and son Tomas projects
- Roof beams for Thomas 8x10, 705 cm
- Structural beams for Thomas house 8x10 550 cm
- Roof beams with protrusions for long overhangs 6x8 450 cm



LOGOSOL B751 band sawmill

A band sawmill that thinks forward

- ✓ Robust and well thought-out. A stable design that gives you an amazing sawing result.
- ✓ Quick and accurate setting of depth of cut. The sawhead is adjusted in fixed steps.
- ✓ Strong rails that can stand up to really large logs. Easy to assemble.
- ✓ Log supports with three fixed height positions.
- ✓ The sawmill has several patented solutions and design-protected details.



Scan the QR-koden to see the film and get more info about the product!





10 REASONS TO CHOOSE LOGOSOL'S BAND SAWMILLS

- 1** Extremely solid and stylish sawmills in premium quality. We only build sawmills that we and our customers are proud of.
- 2** You are up and running quickly! Pre-assembled saw head and easy setup of your sawmill.
- 3** The saw head is adjusted with strong chains in precise steps. Ensures identical dimensions throughout the log.
- 4** Adjustable and high quality blade control that everyone wants for a great result.
- 5** Super-strong lightweight band wheels that provide fast acceleration of the saw blade. The wheels also function as fans that blow chips away which keeps the band wheels clean and cools the band blade.
- 6** Swedish design and manufacturing with smart design and integrated functions.
- 7** 30 years of experience in sawing timber and developing sawmills. With a sawmill from Logosol, you become a professional immediately.
- 8** Patented log holder with eccentric clamping that holds the log in an iron grip.
- 9** A customer favorite is the Last Cut Indicator on the scale that remembers your last saw cut and becomes a reference for the next one.
- 10** A community you want to be a part of. Amazing customers around the world who inspire, engage and excel. Welcome to the Logosol family!





Ferry & Gunde Take a Planing Course

Ferry and Gunde Svan participated in an all-day planing course at the sawing station outside of Logosol HQ in Härnösand.

Logosol's founder and planer-enthusiast, Bengt-Olov Byström, was also there to share his expertise.

In the beginning of autumn 2021, Logosol invited Ferry and Gunde Svan to the head office in Härnösand for an introduction to Logosol's Multi-Head Planer CH3. It was a sunny day at the sawmill with many questions, new ideas and fun moments. The father and son, who own a farm in Dalarna, already use Logosol's B751 Pro Band Sawmill. Now they had the chance to expand their knowledge in wood processing.

A DAY FILLED WITH LAUGHTER

The day consisted of a thorough review of the CH3's functions and possibilities. Bengt-Olov showed the Svans how to set up the machine for planing, profile molding and how to specially design one's own cutting steels for special profiles.

"It's been an educational day with a lot of information to take in," says Ferry.

"We will start using the machine immediately, but there is a risk that we

will come up with our own ideas on how to use it, says Gunde with a big smile on his face.

Together they have a good laugh about the fact that they constantly try to improve on most things they learn, even if they aren't the "in-house expert".

"It's in our family to be inquisitive and to always push yourself to think outside the box," says Gunde.

TO READ THE WOOD

Ferry participates in Timbersports with great success, which involves cutting and sawing wood in the shortest time possible. We wondered if the skills and knowledge required in TimberSports are also used for work in forestry.

"In TimberSports, we talk a lot about reading the wood to be able to get through it in the best way, so I can do that just fine. Of course, you can use that in forestry as well," says Ferry.

Gunde adds that the knowledge

also comes in handy when working at the sawmill. "Ferry knows when and how to turn the log when sawing!"

PRIDE AND JOY

Ferry speaks warmly about the joy he experiences from building with lumber from his own forest.

"It's a special feeling to be able to get wood from your own forest, refine it yourself and create something long-lasting. It will be great to use the CH3 planer to get what I saw really nice and smooth too," says Ferry.

UPCOMING PLANING PROJECTS

"The first project for CH3 will be planing siding for a new gym I'm building on the farm," says Ferry.

Gunde tells us that he will use CH3 to plane floorboards for an outdoor deck. The floors will be made of larch wood and Gunde is looking forward to seeing how the CH3 handles this unusual type of wood. A cool collaboration between father



• Ferry and Gunde already have plans for construction projects where the CH3 will be of great use.



• The future planer owners immediately had wise questions and thoughts about the planing process.

and son, Gunde and Ferry, can be seen on their shared Instagram account, @gundeochferry. Follow their adventures in the forest and on the farm.

It's everything from forestry, bandsaw sawing, skiing and exciting construction projects. We look forward to following father and son in the future!



• Ferry saws spruce from the family's forest with B751, at home in Dalarna.

• Ferry placed 4th at the World Championship in Stihl Timbersports in Munich, 2021.

FOLLOW ON INSTAGRAM!



@ferrysvan
@gundeochferry

TIP!



ANDREAS ALVÅG, TECHNICAL MANAGER LOGOSOL

“Greater demand for our expertise in tools and custom knives for planers!”

We can see a clear increase in demand for our extensive expertise in tools and custom-made knives for planer/moulders.

For over 15 years we have been helping our customers with the right knives and tools for their planers. We have found solutions to the most complex requests and it's only imagination that sets the limits for our customers.

We see that the demand for high-quality mouldings and floors is increasing sharply and that this gives the planer owners many exciting jobs. The value of the refining is great and for many it is the most profitable investment they have made.

Andreas has over the years helped customers and dealers all over the world and he never ceases

to be fascinated by how many different types of high quality timber products that can be produced with these machines.

Below you will find tips on how to easily order your own moulding knives to produce unique profiles on your mouldings and panels.



DESIGN YOUR OWN PROFILE

Custom-made knives increasingly more popular

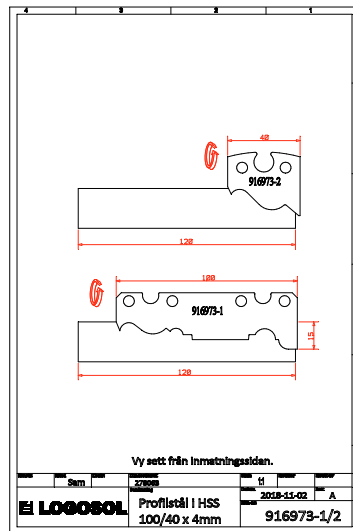
Many customers look for special profiles, and this can become a profitable niche for your planing business. We will help you order custom-made knives, so you can offer your customers unique solutions at a reasonable price.

It is easy to place your order:

1. You send us a sample piece of the moulding by post or email a drawing.
2. We will contact you and give you a quotation.
3. After you have approved the quotation, the knife will be sent to you within 10 days.



• Example of profiles sent in to us. We make custom knives to your requirements!



NEW HELPFUL FEATURE

Find the right moulding knife

Now it's easier than ever to find moulding knives on logosol.com/moulding-knives. In our database there are almost 1000 different moulding knives and you can quickly find the knives to fit your machine.

You can easily filter the moulding knives by position (horizontal, vertical), which machine they fit and what width you want on the knife. When you have found a moulding knife, you will also get tips on combinations where the current knife is included. You can also search for moulding knives you already have to get inspiration about what possibilities there are.

“This feature makes it clearer what tremendous opportunities there are with Logosol’s planer/moulders and makes it easier for customers, whether they are looking for a specific moulding knife or just want inspiration,” says Ted Sundin, who has developed the new feature.

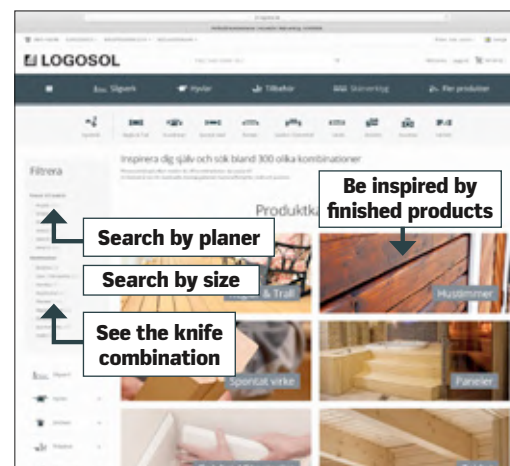
TIPS!
Use the design of old moulding profiles

ORDER FOR FREE

Catalog for tools to your logosol machines,



You find all cutter heads, gibbs and planing and moulding knives in the tool catalogue. Free download on logosol.com



Search and filter by:

- ✓ Type of planer
- ✓ Combination of knives
- ✓ Type of finished product (joists, skirting boards, cornices, etc.)
- ✓ Size of the knife
- ✓ Name of the knife
- ✓ SKU number

Pelle gives a tip!

It is usually easier to plane with a three-sided planer than a four-sided planer, and it only takes marginally longer. If you, for example, want to use the CH3 for producing tongue and groove with one unprocessed side, you place the unprocessed side facing down and set the machine to the desired width and thickness for the finished product. Then you just get started. With a four-sided planer, you have to adjust the in-feed table by using metal plates to avoid any take-off by the bottom cutter.





Logosol's products are sold all over the world. Every day, customers buy our products over the phone, at a fair, or directly on our website. Since our inception in 1989, Logosol has been selling worldwide and innovating our machines.

Around the world, there are Logosol dealers who closely collaborate with the staff at the head office in Härnösand. Some markets have many employees, such as Logosol GmbH in Germany. In the USA, we sell through a large mail-order company that annually sends out hundreds of thousands of catalogs all across America. We have appointed some of its staff to demonstrate, sell, and market Logosol's products.

MULTILINGUAL SALES DEPARTMENT

"In some markets, we sell mostly over the phone or directly from our web shop," says Karin Edholm, sales manager at our head office.

nager at our head office.

"In the sales group, we speak over 10 different languages. It is exciting to be in everyday contact with customers from so many different places in the world and with different plans using our machines," Karin continues.

At the head office in Härnösand, there are salespeople who sell directly to customers in certain markets and who act as sales support and support to retailers in different countries.

BANDSAW WORK IN THE WEBSHOP!

In the marketing department at our head office, printed materials, advertisements and websites with web stores are created for most markets. Check out the various web pages under the flags that represent this spread! "It's fantastic when a customer on the other side of the world orders a band sawmill directly from our webshop."

It is especially important that we can provide excellent customer service and guarantees so that customers are completely satisfied throughout the entire purchase process. As a result, Logosol customers become lifelong customers," says Karin.



• The dealers gather at the sawmill outside Logosol's headquarters in Härnösand to learn more about the new products.



• Henrik Sigurdsson is CEO of Logosol GmbH in Germany but is originally from Skellefteå, Sweden.



logosol.com.au



logosol.ro



logosol.dk



logosol.nl



logosol.ch



logosol.kr



logosol.hr



logosol.pl



logosol.sk



• Tom Fox is one of our dealers in the USA. Here together with Logosol's founder, Bengt-Olov Byström.



• Mattias Byström discusses the new products with German dealers Roland Noll and Mattias Brand.



• At the Logosol World Meeting each year dealers from 20 countries meet. Focus is on the products and customer service.

LOGOSOL IN THE WORLD

Logosol's products are sold in over 65 countries every year. In the last 30 years, Logosol has transformed from a manufacturer of a sawmill to the hub of a growing international network. Logosol subsidiaries that sell directly to customers can be found in Norway and Germany, among others. Other important markets are France, U.S.A. and Great Britain. At our head office in Härnösand, we have contact with dealers and customers from all over the world.

Some highlights:

- 1996 Logosol establishes subsidiaries in Germany.
- 1999 Great media interest generated when Logosol established its USA company in Madison, Mississippi, with among other things, world-record sawing.
- 2013 The first Logosol World Meeting was held in Härnösand. Now, retailers from 15-20 countries meet annually in Härnösand to share experiences, find inspiration and plan for next year's marketing and sales.
- 2014-2018 Establishes new dealers in Slovenia, Poland, Italy, South Korea, Japan, Slovakia, Spain, Argentina, Colombia, Latvia, Hungary, Finland and Ireland, among others.
- 2015 Establishes its own office in England.
- 2018 The UK's largest woodworking chain includes Logosol square cutter planers in its product range and begins demonstrating the products in its stores.
- 2018-22 Establishes new dealers in the USA, Iceland, Switzerland, Denmark and Scotland.



logosol.si



logosol.at



logosol.mk



logosol.com



logosol.lt



logosol.by



logosol.ee



logosol.it



logosol.ie



Milling in the Caribbean

Logosol was invited to St. Vincent to provide training for the St. Vincent & The Grenadines' Ministry of Agriculture, Forestry and Fisheries. The Ministry had just purchased a Logosol sawmill. Logosol's trainer helped the enthusiastic beginners to get started correctly with the sawmill.

Ulf from Sweden produces playrooms for IKEA:

When you leave your children in the playroom at Ikea, take a closer look at the fixtures and fittings. Some of them have been produced using a Logosol planer/moulder, among other equipment. "We have fitted out 150-200 playrooms throughout the world," says owner Ulf Feldt from Sweden.



Extreme Weather Milling

Of course you can cut lumber even though it is winter and cold. This is proven by the picture above, where the temperature is -26° F. The owner is fulfilling his dream of building a cabin in the middle of the wastes of Alaska. The logs for the cabin are cut by a Logosol M5 sawmill, which has been taken to the building site by airplane and snowmobile.



logosol.de



logosol.us



logosol.be



logosol.cz



logosol.se



logosol.co.uk



logosol.es



logosol.com.ua



logosol.ru



Sawing in Front of a Royal Audience

When the Swedish royal couple made their first state visit to Bhutan at the invitation of King Jigme Khesar Namgyel Wangchuck, Logosol was part of the Swedish entourage. After Logosol's demonstration, Bhutan's Prime Minister Tshering Tobgay became so interested that he wanted to try the mobile sawmill from Sweden himself.



Closer to nature with your own raft

"We are so busy that we don't have time for the most important thing in life, life in itself," says Martin Richter who has built two rafts using his two sawmills – to inspire others to enjoy nature. The two rafts are for hire and anchored North of Berlin. Martin has built them himself using a Logosol Sawmill M7 and a Big Mill Basic. The rafts are made of oak, cut down, according to old tradition, in the winter just before full moon.



logosol.com.br



logosol.hu



logosol.no



logosol.pt



logosol.pl



logosol.ca



logosol.co.il



logosol.fr



logosol.fi

NEWCASTLE UPON TYNE, UK



A Bespoke Carpenter Saws His Own Wood

Nick James realized his dream of owning his own forest. The idea was to lower his company's carbon footprint, but the forest also became a source of inspiration.

In his workshop in Newcastle upon Tyne in England, Nick and his team work tirelessly with intention. They use proven methods to create furniture that lasts a lifetime.

"I design and build my furniture with the idea that it should last a very long time and be passed down through generations," says Nick.

THE DREAM OF HAVING HIS OWN FOREST

In the autumn of 2021, Nick bought a piece of woodland in Northumberland, a region north of Newcastle.



• Nick is in his workshop, part of Mushroom Works, a creative cooperative where many different creators are housed.

The idea was to further minimize the carbon footprint of his company.

"It has been a lifelong dream to own a forest of my own," says Nick.

In addition to being able to produce our own wood material for carpentry, working in the forest has also become a valuable experience.

"Working in the forest is so wonderful and restorative for me. That's often where I have my best ideas!" says Nick.

FROM WOOD TO TABLE

After a careful probing of markets, Nick's choice fell on an F2+ chainsaw.

"The sawmill was very easy to put together and I am positively surprised by the quality and precision of the sawing. Now I will saw the trees that I have thinned out from the forest. In addition, I can offer my customers the opportunity to have their own trees turned into tables," says Nick.

We look forward to continuing to follow Nick on Instagram on his two accounts:



nickjamesdesign
nothernwoodland



• Follow Nick's forest projects on Instagram at [@nothernwoodland](#)



• Many of Nick James' designs are direct commissions from customers, such as this walnut dining room table.



• The genius of F2+ is its flexibility. If you have shorter logs, you can easily shorten the sawmill as well.



Follow Nick's carpentry projects at [@nickjamesdesign](#)

HOW TO

LOGOSOL CH3

• A gazebo can fulfill an important function in the garden. It provides shade on sunny days and is also a lovely ornamental piece in the garden. The plans are published in collaboration with Svenskt Trä and are available for download with cut lists and material specifications at www.byggbeskrivningar.se. The gazebo plans are available in two different sizes.

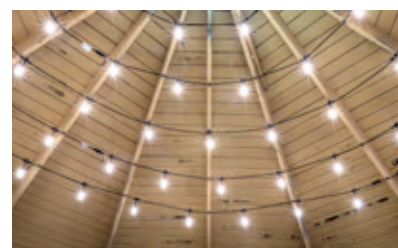
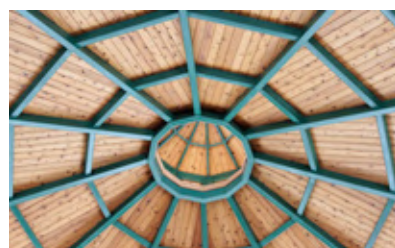
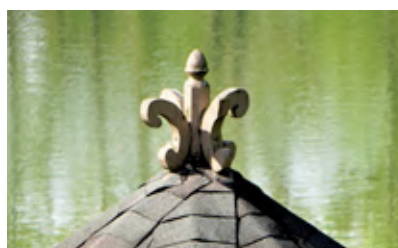
Plan and build a nice gazebo!

Building a beautiful gazebo can be quite a challenge. The frame can be built in with glass windows and doors. Using, for example, a CH3 planer, you can process the wood yourself and choose unique profiles for moldings and panels.

With the plans from Svenskt trä as a basis, you can design your gazebo in different ways. Below you will find inspiration for how details and color choices can put a unique stamp on your construction project.

DOWNLOAD THE PLANS

Find more information and plans to download! Both the construction plans and useful construction tips can be found on the website byggbeskrivningar.se. The plans are produced by Svenskt Trä in collaboration with the construction and wood trade.





Creative Upcycling in an Urban Environment

"Things don't have to last forever. Death and rebirth is a natural process and I think we need to try to get back to that way of thinking," says Graham Andrew, founder of Ravenwood.

Graham Andrew's passion is nature, woodworking and art. In his company, he has managed to combine the three into an exciting niche.

After growing up in London with an art education background, Graham moved to Stockholm and worked in the arborist industry for 15 years. In 2018, he started Ravenwood, which is a subsidiary of Jackson Trädvård, the largest arborist company in Scandinavia with approximately 60 employees.

PASSIONATE WORK

"I jump out of bed at 5 o'clock and happily go to work. At the end of the day, I have to force myself to go home. To be able to work with the creative process on a daily basis and help nature at the same time is fantastic," says Graham.

Ravenwood's commissions mostly come from municipalities. There's everything from picnic tables, barbecue areas to wooden sculptures and playgrounds. Some commissions come from private customers and then mostly apply to tables and furniture.

"All of our projects are aimed at benefiting nature. When we cut down a tree, we try to leave as much deadwood as we can, because that's what nature needs. For example, we make a sculpture from the dead tree and in this way let the dead tree remain in the forest instead of being thrown in the landfill.

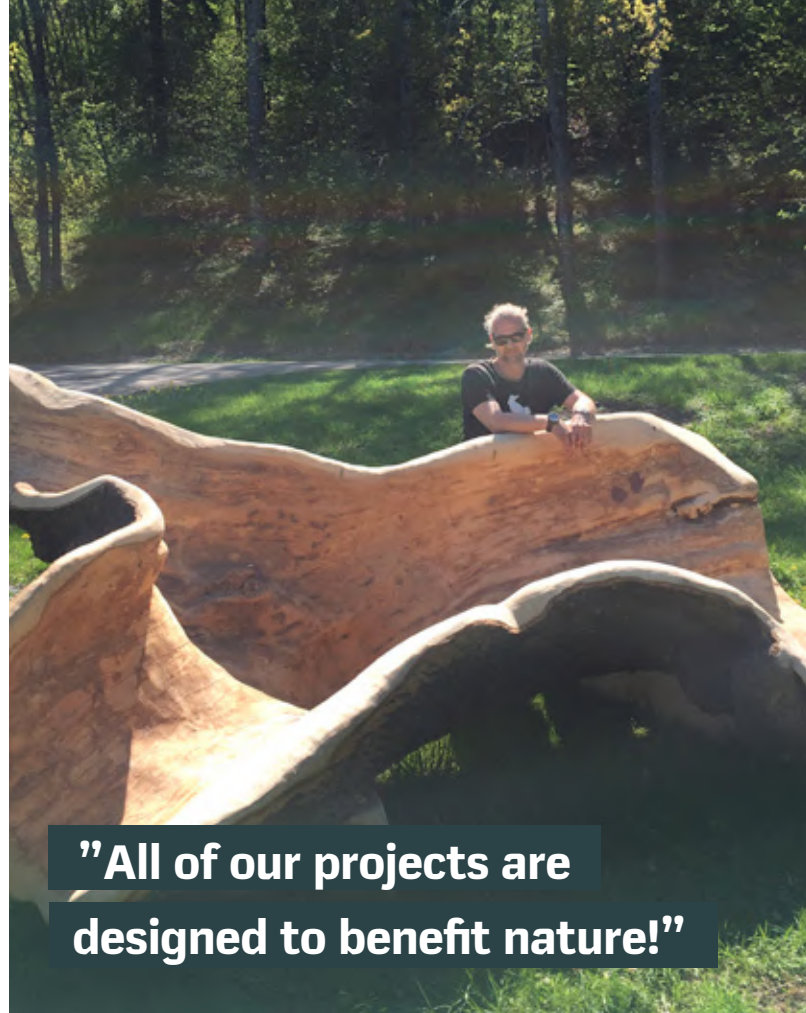
We create burrows of different sizes to imitate real hollows so that insects, animals and fungi can have somewhere to live.

Graham uses Logosol's Bandsaw B1001 for his projects. He has stored it in a shipping container to keep it safe when it is outside and to have a roof over his head in bad weather. But it is also mobile, so when something needs to be sawed on site, Graham lifts the entire container onto a truck and drives it directly out to the sawing site.

NATURE CONSERVATION FOR THE CLASSROOM

"The current project has been very rewarding. It's an outdoor classroom where three nearby schools hold lessons in nature conservation," says Graham. On behalf of Upplands-Bro municipality, and in collaboration with an ecologist, Ravenwood has built an outdoor classroom from the materials that are left over from a nature conservation felling project in the area.

"The B1001 will be very useful in our projects and we look forward to taking on new challenges in the future," says Graham.



"All of our projects are designed to benefit nature!"

(Below) • A Swedish "mulmholk" is a built structure that is supposed to imitate natural hollows in trees and designed to attract insects. Here is an oak tree filled with sawdust, leaves and other natural materials that help small insects thrive.



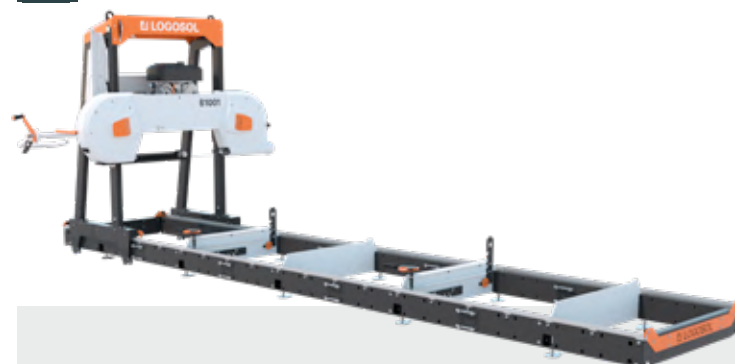


• Ravenwood uses a B1001 for its projects, mounted in a shipping container to keep it safe from the elements and easily transportable to new sawing sites.



@ravenwoodcreations

www.ravenwood.se



LOGOSOL B1001 band sawmill

**Next-generation band sawmill
– loaded with power and capacity**

- ✓ Robust and well thought-out. A stable design that gives you an amazing sawing result.
- ✓ A Last-Cut indicator on the height adjustment scale shows the position of the last cut, and works as a reference for the next.
- ✓ Two log clamps secure the log with great force without damaging the wood. Patent-pending with sturdy handles and a robust design. They work just as well when you take the first cut as when you cut the last, thin board.
- ✓ Developed from the ground up, where integrated functions give a clean design and easy use.
- ✓ The patent-pending, light-metal band wheels are combined fan blades that cool the band blade and work as air brakes. In addition, they keep it clean and tidy both at the worksite and inside the sawhead – a great advantage when changing blades or when other maintenance services are made.
- ✓ The sawmill has several patented solutions and designprotected details.
- ✓ More smart accessories are being developed.



Scan the QR-koden to see the film and get more info about the product!



• Another example of a “mulmholk”. - Sometimes, Ravenwood also makes larger mulmholks for birds and bats.



• On behalf of Upplands-Bro municipality and in collaboration with an ecologist, Ravenwood has built an outdoor classroom from the leftover materials from a nature conservation felling in the area.



• Peter Bräck in the container that houses his money-making machine, the CH3 multi-head planer.

“My planer has paid for itself twice over!”

The Bräck family has numerous projects on the go at the same time, but when everyone helps out, it's both faster and more fun!

Just outside Gnesta in a large red building located on top of a hill, we meet Peter and Anna-Lena Bräck. Peter stands by his planer and lifts away some completed mouldings.

“I’ve done a lot of planing with my planer, including a lot of tongue and groove boards, some antique moulding and ordinary planed boards”, says Peter.

When he needs to keep the production level high, Peter gets help from the family. Both when there is planing to be done and when the kiln is loaded up.

“I planed 150 metres of antique moulding last Sunday, and probably saved 17-1800 Euros in the process,”

says Peter proudly. Many buildings on the property have been constructed with the family’s own lumber, one of them being the Brewing House. The house interior is covered with wide Aspen boards that Peter has planed using trees from their own land.

“It’s both exciting and wonderful to be able to take advantage of nature’s resources in this way,” says Peter, standing in front of his CH3.

“All these projects and buildings would probably never have been completed if I hadn’t had my sawmill and my CH3 planer. That’s absolutely clear. My planer has paid for itself twice over,” says Peter.



• The planed Aspen panels create a bright impression in the ceramics workshop in the Brewing House. The building also houses a honey extraction room and a brewing room.



• The Bräck family uses their planer for both renovations and new construction on their farm in Gnesta.



LOGOSOL CH3 multi-head planer

User-friendly, high-quality multi-head planer for sawmill owners & carpentry shops

- ✓ Profitability from day one. You can produce a lot of timber on the very first day.
- ✓ More planer for your money! The chip extractor is also very affordable, and together they give you a complete solution at a great price.
- ✓ A wide selection of moulding knives, and you can easily order custom-made knives at a reasonable price.
- ✓ Perfect planing result! The high speed of the horizontal cutter and the ability to lower the feed rate when necessary, give you an unbeatable result no matter what wood you are planing.
- ✓ A planer for those who have high demands on user-friendliness. Clear scales for width and thickness. By using the supplied tool for installing moulding knives, you can see where on the top cutter the workpiece will begin to be machined and install the knives in exactly the right places. You can easily access all settings from above.
- ✓ Rustproof, which means that the machine can be used in unheated premises.
- ✓ Improved chip management with aerodynamically designed chip outlets.



Scan the QR-koden to see the film and get more info about the product!.



• In Ove Johansson's workshop there is everything, and then some. A result of lifelong collecting and a great interest in technology.



• Ove plugs in the cord, puts on the hearing protection and switches on the saw. A large log of pine is waiting at the sawmill.



• Fresh Cut was there when Ove Johansson sawed the first cut with his newly purchased Logosol F2 Electric Saw. "Now I just have to

"I'm going to have a lot of fun with this machine!"

Ove Johansson lives exactly where the street lights end and the suburb turns into a village of red cottages in Örebro. A well-stocked workshop, a small forge and a new, unpacked F2 chain sawmill with an electric saw bear witness to a seasoned woodworker's lifestyle. "I enjoy being retired," notes Ove.

After a long professional life, Ove Johansson chose to downshift. At the time, he was only 61 years-old, had been working since he was 17 years old at a milling machine, and felt that he had grown tired of lifting heavy beams with calloused hands.

FIRST PROJECT AS A PENSIONER

Over the years, Ove has worked and tinkered with all sorts of things. As a

newly retired person, he started renovating and expanding an old barn and turning it into a red-painted and cozy residence for himself, his wife and their two dogs, Wigge and Mio.

Where Ove and his dogs live, Örebro's population is quickly growing to a breaking point. Just a few days ago, Örebro passed Västerås as Sweden's sixth largest city. Warehouses and logistics dominate the area as

it is conveniently located midway between Stockholm and Gothenburg, both with major universities and hospitals. From the site, Ove can see how the construction cranes rise towards the sky and is just a stone's throw, well perhaps a long stone's throw, from the rural idyll that is his home environment. New residential areas are developing rapidly.

But Ove takes it easy and doesn't let it bother him. A course in blacksmithing inspired him.

"Throwing a piece of iron into the fire, watching it turn white and then pounding it with the sledgehammer is fascinating", says Ove.



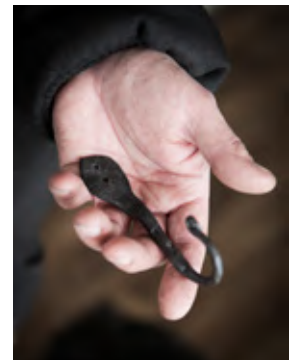
adjust it a bit before I split the log and start sawing boards. It really feels like great fun."



• *Coffee with Fresh Cut in Ove Johansson's renovated house. When he started, it was just a barn; today it is a red-painted, cozy home that he shares with his wife and their two dogs, Wigge and Mio.*



• *With his own sawmill, there will be both renovation projects and new construction.*



• *Ove holds blacksmithing courses in his own forge. The first thing his students get to make is a hook.*

Now he holds blacksmithing courses in his own forge, set up under an extended roof next to his workshop. There are a handful of anvils, a furnace and an 800-kilogram spring hammer. The first thing his students get to make is a hook.

"Blacksmithing has become a bit of a passion in the autumn of my life," says Ove.

A WELL-STOCKED WORKSHOP

Ove leads us into the well-stocked workshop. Everything is here, and I really mean everything and a bit more. The whole thing is reminiscent of a well-stocked, well-sorted hardware store. On the walls, on the ceiling, along the floor.

"A result of a lifetime of collecting," Ove mutters, straightening some pliers hanging in a row on a wall. "Maybe I

should clean up a bit."

Does he know what he has? And where?

"Yeah, I think so," he says and looks around, pokes at a red can of oil, and moves a new knife sharpener that has just been unpacked. Everything you need is here, most of it from the times when one chose to repair things instead of buying new."

HIS OWN SAWMILL WITH AN ELECTRIC SAW

Slightly dazed, we wander through Ove Johansson's treasure chambers. He touches some steam engines in the kitchen, thinks about the roof tile conveyor with a telescopic arm that Ove rents out, and contemplates the garden furniture he made from rough-sawn pine wood. And that's where his new machine comes into play.

Under a blue tarpaulin is the recently unpacked and assembled chainsaw from Logosol that Ove bought, an F2 chainsaw with an electric saw.

Ove happily lifts the protective tarpaulin away. It is a lightweight sawmill that can easily saw really large logs, and all the while easy to lift and transport by hand. With the tractor, he has placed a rough and gnarled pine log on the sawmill. He plugs in the cord, puts on the hearing protection and turns on the saw. With a loud whine, the chain eats a few centimeters into the frozen log. Ove turns it off again.

"That was the first cut," he says contently. Now I just need to adjust it a bit before I split the log and start sawing boards. With this, I can come up with many fun things to do. It really feels like great fun."

**"The customer is
always in focus"**

KARIN EDHOLM, SALES DIRECTOR, LOGOSOL



HOW TO



Saw & Build Your Own Bench Press

With a burning interest in strength training and woodworking, an idea came to Anton. Why not build a wooden bench press?

Anton Byström, who is responsible for the Spanish-speaking markets at Logosol, is passionate about strength training. When he thought about investing in a bench press, the idea of building one himself was born. After all that was said and done, Anton went to work and designed his own bench based on the dimensions of a competitive bench press.

“We sawed raw pine 2 inches thick and built directly from that,” says Anton.

“The design of the rack was stress-tested with a drop of a 100 kg loaded lifting bar and it held up well,” he notes. The design is a standard design and can be adapted to body size and personal preferences.

BUILDING A COMPLETE TRAINING GYM IN WOOD

The bench press is just the first in a series of strength training equipment that Anton will build this year.

The goal is to build more wooden constructions with weights cast in concrete.

SAVE MONEY AND BUILD IT YOURSELF

The construction plans for the bench press can be downloaded using the QR code on the right. You can also watch our live demo of how Anton built the bench on our YouTube channel Logosol Portable Sawmills.

Please note: You are building this structure at your own risk and are responsible for testing it yourself before you start lifting. Choose densely grown and knot-free wood in the critical areas.



TIP! Download the construction plan of the bench press and build your own!





• Alexander Wikström uses a Logosol Big Mill, equipped with a 150 centimeter long blade when he saws the wood for his furniture. His favorite materials are oak and elm.

A Calling in Furniture

Alexander Wikström stumbled upon furniture making as a result of selling a homemade coffee table online. “How hard could it be?” he thought to himself, and set to work. On his third try, he was satisfied. His partner sold the first two tables online. Now he builds furniture full time, by hand, preferably in oak.

His workshop in Landvetter is not large, about the size of a residential garage. But the furniture he makes here has become well known all over southern Sweden. A dining table signed by Alexander Wikström cannot be picked up directly from the warehouse, it must first be ordered and manufactured.

Despite the fact that his most recent job was in the weight and balance field at an airport, he already has roughly three thousand followers on Instagram, and many of whom are carpenters themselves.

ters themselves.

“It’s nice that people are curious about and want to pay for what I do,” he says.

It began with an ad for a coffee table that his partner saw on Blocket. “I can make that myself,” thought Alexander and he pulled out his tools. His job at Landvetter Airport no longer felt so attractive. He wanted to leave the office cubicle to do something he loved and could put his soul into. The first two tables did not turn out quite as he had imagined. However, he was

satisfied with his third. Nevertheless, his partner quickly sold the two first tables as well.

“I realized that there could be some revenue in my furniture,” says Alexander.

ONLINE ORDERS

Alexander found lots of information about furniture carpentry and wood selection online.

There were also courses and knowledgeable carpenters with extensive experience to learn from. With a new website for his creations, it didn’t take long before the number of orders increased. Alexander set up his own workshop, which he built with the help of his brother. Once it had been put into use, he felt ready to take the plunge.

“Now it’s going pretty well,” he

TEXT: MATS WIGARDT | PHOTO: BOSSE LIND



• A furniture order is governed by the availability of dry wood.



• In his workshop in Landvetter, Alexander Wikström likes to work with inspirations from the classic American furniture tradition that takes advantage of the natural shape of the plank and also Japanese joinery.

• To stabilize cracks, Alexander uses a decorative joinery technique where he inserts a locking piece in the shape of a bow or a rose, with a precise fit that holds the planks together.

Making

says contently while showing among the machines, half-finished tables and rough planks of beautiful wood leaning against the wall.

On the workbench, a white oak table awaits its finishing touches. In the corner, there is a real gem– a piece of black oak that has spent the last 8,000 years in a nearby pond.

Alexander's favorite materials are oak and elm. Fruit trees also work well. His dream is to get hold of a really big ash, preferably with a diameter of 100 centimeters, that he can make a dining table out of for himself.

"I get tips on wood supplies from several different places," says Alexander. "Among my sources, I know arborists who often salvage large old trees that I can use. That's how I recently got a hold of a wild plum tree with a width of 60 centimeters."

CLASSIC INSPIRATION

An old oak log is heavy and unmanageable. Sometimes it can be sawed on-site, but often Alexander has to rent a crane and truck to get it home to the workshop where it can lie and dry.

When it is ready to be sawn, he uses the Logosol Big Mill with the 150 centimeter long blade.

"Then I can easily saw a log with a diameter of 135 centimeters and it can be done just as easily here at home or where the tree happens to be."

The customer can be a middle-aged couple from Stockholm with high standards and an empty nest. It is not uncommon for the customer to also want to be involved when the table is designed.



• The Internet is an important tool for marketing and sales. Alexander has several thousand followers on Instagram. Please visit his website: www.wikstrominterior.se

Continued on next page...

Wait times and orders are dictated by the availability of dry wood. It may take some time before a suitable tree is ready to begin processing. It must first lie outdoors, then be dried approximately to eight percent, and then acclimate to the climate and temperature in the workshop.

“It’s good when the customer understands wood, then you can avoid unnecessary discussions,” notes Alexander. “The minimum wait time is three months. But it can take up to two years before the wood I get can be used. Many customers tend to be in a bit of a hurry.”

DECORATIVE JOINERY TECHNIQUE

Consequently, the cracks that always occur in rough planks must be stabilized before proceeding. Alexander then uses a joinery technique that is common in the USA but rarer in Sweden. He inserts a locking piece, for example, in the shape of a bow or a rose that fits perfectly and holds the plank or planks together.

“It can be made to be decorative, where pieces of metal or other types of wood are used,” explains Alexander.

The base can then be designed in different ways, depending on the customer’s wishes, in wood or iron.

There are no “next steps” entered in Alexander Wikström’s calendar. He thinks he has achieved so much in a short time that he does not feel stressed. But in the long term, he would like to learn more, such as making smaller things, preferably cabinets and drawers where he can develop his technique with the hand tools.

PLANING PLUM TREES

A dream, he admits, is to put the planer to a fine old plum tree he has saved and sawn with his Big Mill. From the wood, he wants to carve some kind of journeyman test piece, preferably a cabinet with neat joints and beautiful doors.

“It’s the finest tree I’ve ever seen,” Alexander beams. “It must be used for a special purpose.”



THE LOGOSOL PROMISE - FOR A SAFE BUY!

2-year warranty

Logosol gives you a 2-year warranty on all machines. Consumable items, such as belts, guide bars and chains, are not covered by the warranty.



2-month money back guarantee

Logosol gives you a two-month money back guarantee on all machines. You can test whether the machine meets your requirements before you make your final decision. If you regret your purchase, you only pay for consumable items and the return shipping.



Support all over the world

We provide service and support on our products. Skilled technicians answer your questions by phone, +46 611 18285, from 8 am to 4 pm all weekdays. You can also get support by email.

We are happy to help you!



LOGOSOL DRYING CHAMBER

Dry Wood Quickly & Easily

Dry wood is needed for fine carpentry. Moldings, furniture, floors or windows are examples of when dryness is particularly important. Ideally, dryness should be down around, or even below 10%, without cracking. This can be difficult to achieve with traditional air drying. With your own wood drying chamber (WDC), you get perfectly dried, quality carpentry lumber in a few weeks.



• Loading is easily done thanks to the high opening.

Logosol's WDC wood drying chamber is a smart solution with a soft insulated layer made with a sturdy internal aluminum construction.

The drying chamber retains the warm and moist air during the initial drying phase. If the drying chamber is outside, which we recommend, a two-layer solution is used, with a protective outer tent. The dryer only weighs around 50 kg, so two people could easily move it.

"An alternative to an exterior tent could be to build a small independent weather protection for the insulated drying chamber yourself. It could be a good option if you are going to have the dryer permanently installed", advises Mattias Byström at Logosol.

POWERFUL WITH GOOD CONTROL

The WDU wood dryer unit, of 2 KWh has a powerful fan for circulation in the chamber. The unit also has an integrated air intake system that sucks air into the dryer with the help of the negative pressure created in the air stream. The dry and cold outdoor air is mixed with the heated, moist air in the drying unit before it reaches the wood in the chamber.

The drying chamber's top valve has gradual opening positions, which allows you to regulate how quickly the steam is to be released.

This well-designed system helps you

achieve smoother and more controlled drying results.

GREATINTEREST

"We have noticed that there is great interest in the drying chamber for the WDU. The setup is very simple. Never before has there been a ready-made solution, where you can be up and running, drying wood for carpentry material within an hour of assembling the facility," says Mattias.

The drying chamber is currently available in one size. The internal length is almost 3 m and the width 70 cm. The height is 1.1 m at its lowest point, but slopes upwards to 1.4 m at the opening to facilitate the loading of the timber.

"It comes with aluminum feet to lift the wood stack off the floor, so air can circulate freely. Loading is easy, as the entire long side can be opened. The ribs, so-called shims, are laid between the timber layers. They should be dry and preferably as tall as the drying wood, to create sufficient circulation. Some space should be left between the boards and also towards the sides of the dryer," says Mattias. The WDU with WDC is ordered as a package, with or without an outer tent, where everything you need is included. When you have assembled the drying system, you just plug the cord into a normal 220v electrical

outlet. Never before has it been so easy to get perfectly dried carpentry lumber of all possible types of wood and dimensions.

DRYING FOR ALL SITUATIONS

For some areas of use, for example fences, piers, exterior siding or simpler buildings, it is perfectly possible to use freshly sawn timber. For other areas of use, the wood must be dried before it can be used. When the wood's moisture content has dropped to a maximum of 20%, the wood is "construction dry" and usable for construction. Other terms for wood that has dried to 20% are "planer dry" or "shipping dry". Traditionally, the wood that has been dried for building is air-dried outdoors. Today, virtually all wood in the wood industry is dried in wood dryers, but air drying between shims is still the most common method of drying wood in small-scale wood processing. When wood is used for interior joinery, flooring or furniture, the moisture content must be reduced to 10% or less.

This can be achieved by storing the wood indoors in a heated room, but preferably by drying it in a wood dryer to reduce the risk of cracking. Over the years, Logosol has gained a lot of experience through the sale of WDU (previously Sauno Drying Unit). The current model of the dryer is a big seller and will be a great joy to many carpenters and builders who have high demands and little patience waiting for wood to dry.



Scan the QR code to see films and get info about the product.



• At the end of the three days of the trade fair, Logosol's Henrik (right) and Matthias were pleased and happy to have managed to saw so many cubic meters in such a short time.

“Logosols sawmills are quite simply better – both to the eye and touch”

Sawing about 15 cubic meters in three days, that's a lot of wood. That's what happened at the Agrialp trade fair in South Tyrol last autumn. Logosols' Henrik Sigurdson and Matthias Brand drove from Bad Saulgau to South Tyrol for the launch of Logosol B751. There they put the new band sawmill to the test for the first time.

“I've never sawn so much in such a short time,” admits Henrik, who has been CEO of Logosol Germany for many years and is a seasoned carpenter. When the log-laden truck arrived at the exhibition stand, he was very surprised and whispered to Matthias: “All that can't be for us, can it?” But it was, and with delivered along with the logs there was also a detailed

sawing instruction for two log cabins that were to be built on site.

BUILDING FOR A GOOD PURPOSE

The plan had been developed together with the exhibition organizer “Profanter Gartentechnik,” a Logosol dealer in South Tyrol. Under the guidance of Logosol's log house expert Erich Pohl, two log houses were to be built from the finished sawn timber. The log houses would subsequently be auctioned for a good cause. Twelve highly-motivated course participants were prepared, under Erich's guidance, to use the specially sawn timber to build two stately log houses. This was part of a construction course for building in timber.

UNIQUE SETTING OF THE SAW CUT

“We sawed, talked, sawed, talked and continued to saw,” says Henrik with a smile, remembering the trade fair's busy and pleasant days.

His colleague Matthias also remembers the many visitors to the trade fair who formed a permanent ring around the exhibition stand. The result was obvious:

“Our B751 performed the mission with flying colours!” says a proud Matthias, who was impressed by how easy the new bandsaw was to use. The ease and speed of the work is mainly due to the new setting of the saw cut.

“Our B751 performed the mission with flying colours!”

With the revolutionary Last Cut indicator, which shows the latest saw cut, the saw measurement can be adjusted quickly and accurately. Henrik was also impressed with this feature:

“The saw cut setting is almost like magic, even though it is manual. This



• The logs, which were sawn up with the B751 band sawmill, contained approximately 15 cubic metres of timber.

is only possible with Logosol's band sawmill", he explains with a laugh.

REVOLUTIONARY LOG HOLDER

Over three days, 15 cubic metres of timber were sawn. At the same time, Erich and his course participants worked on the log houses, which were completed in time for the auction to take place on the last day of the fair. The timber dimensions were exactly right; the B751 had done a fantastic job and left no marks on the logs.

"The B751 is equipped with a new and revolutionary log holder with eccentric handles that do not damage the wood," says Henrik, highlighting another unique function of the new band sawmill.

A GOOD JOB WELL DONE

With such a perfect result, it was not difficult to auction off the two log cabins for around EUR 7 000. The money was donated to the "Bauernnotstand fund," an association that supports needy farmers in South Tyrol.

"After three days of the trade fair, everyone was happy," says Matthias. All the Logosol personnel contributed



• In order to cut all the logs, the work must be quick, but at the same time give an exact result.

to an excellent job well done, not to mention the new band sawmill.

"We received orders already during the trade fair. There were customers of various kinds, ranging from entrepreneurs in forestry and crafts, to ordi-

nary private individuals", says Henrik, who is incredibly pleased that Logosol once again booked its presence at a successful trade fair.

TIPS FROM LOGOSOL!

Timber for log houses & planed wide slabs with a log moulder



Logosol has really good solutions for shaping or planing timber cants. For both band sawmills and chain sawmills, there are reliable and affordable log moulders available.

The band sawmills has a patented system specifically for log moulding. The 400 mm wide cutter head can mill timber cants that are up to 7 inches, without resetting the cutter head or

the moulding knives.

”You simply rotate the log a half turn and secure it from the other side. This way you also get perfect fit between the top and bottom side radius, even if the log varies slightly in width”, says Robert Berglund, product manager for sawmills.

If you want to plane the timber, that is possible too. Many of Logosol’s customers want the inside of the wall planed. The cutter takes 400 mm in one operation, but almost twice this width if you plane in two operations,

since the cutter head can be moved laterally.

”This might also be of interest to those who cut wide slabs used for table tops”, Robert states.

The log moulder for the chain sawmills is very affordable and has been praised by customers over the years.

”It doesn’t have to cost a fortune to have a small log house factory, and you can always upgrade later on as your interest grows”, Robert concludes.



• In Sweden its common to use blocks for log house building.



• Great, consistent moulding results makes for easy building.



• From log to cabin with products by Logosol!



• Many people dream of a log house, and the market for unique solutions is big. Offer your customers turnkey cabins. Or why not build your own dream house?



LOGOSOL LM30 Log Moulder

Log moulding on chain sawmills with the LM230

Equip your chain sawmill with the Logosol LM230, and produce large amounts of timber for building log houses. Quickly and easily you mill both the top and the bottom of the cant. Knives for producing log house timber are available from 3 to 6 inches. Available with electric motor and as a model powered by a chainsaw.



Scan the QR code to see films and get info about the product.

LOGOSOL LM410 Log Moulder

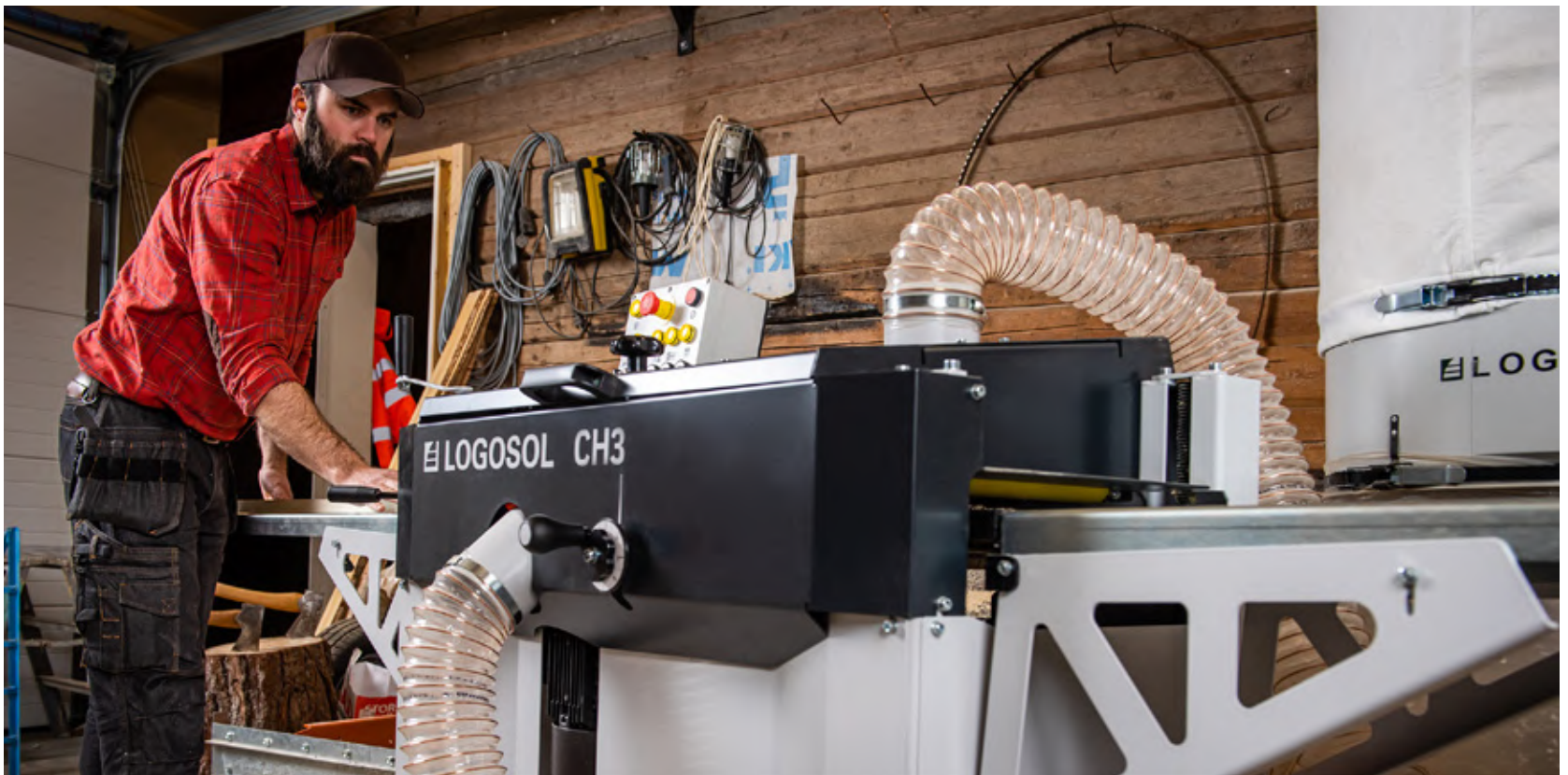
Log moulding on band sawmills with the LM410

The log moulder LM410 also works as a jointer/planer for beams of dimensions up to 800 x 800 mm. Available both with petrol engine and 3-phase electricity. The track width is adjustable and fits most makes of band sawmills, such as Logosol, Norwood, Woodmizer and Lennartsfors. Patented equipment facilitates the operation and gives a better result.



Scan the QR code to see films and get info about the product.

Compatible with
most makes of
band sawmills!



Great Lake Woodcraft Improves Craftsmanship with the CH3 Planer

At Storsjön near Östersund, we find Great Lake Woodcraft, a new carpentry business with sustainability in focus.

In 2019, Johannes Poignant and Jonas Lindholm started their business with a shared dream of being their own bosses and having a varied and inspiring work life. Great Lake Wood Craft has two main parts, felling trees in the summer and carpentry in the winter.

"The variety of tasks is fantastic and it's fun to be able to control the entire process, from felled trees to the finished product," says Johannes.

"We want to be able to offer sustainable products produced from local materials."

COMPLETE CONTROL OF THE ENTIRE WOOD REFINING PROCESS

"We like being able to control the entire process from felling, sawing, drying and carpentry. Our business also does residential tree felling. "We do specialty carpentry work to order – renovating houses and building furniture, mostly conference and dining room tables," says Johannes.

VERSATILE CH3 IMPROVES CRAFTSMANSHIP

Our latest compliment to the business is the Logosol CH3 multi-head planer. With the planer, we can offer even more services and take on more specialized jobs.

"We plane a lot of paneling, but CH3 is also good to have when renovating old houses with older moldings that are no longer available at the lumber yard. Additionally, we use it to make sauna seats as we have plenty of aspen wood at home. We recently used the planer to build a new stair railing. We bought new molding knives to mold round bars and it turned out beautifully," says Johannes.

DRYING WITH LOGOSOL WOOD DRYING UNIT WDU

After felling, the logs are taken home to the carpentry shop where they are sawn and dried with the Logosol Wood Drying Unit (WDU).

"We purchased the dryer and built a drying chamber out of cellular plastic. As we saw all year round, it is good to be able to dry, especially what we saw in the summer", says Johannes.

You notice when you talk to Johannes and look at the business'



The carpentry workshop often produces large dining and conference room tables.

Instagram account, that it is important for the guys to enjoy themselves and have fun at work.

"We are a small business and we want to keep it that way. We don't even have a website. The jobs still roll in and we don't have to overwhelm ourselves," laughs Johannes.



Follow Great Lake Wood Craft on Instagram!
@greatlakewoodcraft
@tradfallarnaostersund



**"It's fun to be part of the Logosol team
a company with endless potential"**

Hey Fredrik! CEO of Logosol

Returning to his hometown with an interest in sawmilling, Fredrik moved back to Härnösand to assume the role of Logosol's CEO.

Logosol News is pleased to present Logosol's new CEO, Fredrik Forsberg. During his career, he has worked as a finance manager, CEO and consultant in many industries, such as IT, construction and insurance, and he has specialized in company development and transition situations.

"Logosol has seen incredible growth. What the company needs right now is an upgrade in several areas, such as systems, routines and staffing, which is what I've worked with all of my

professional life," Fredrik announces.

SAWING ON LUNGÖN

Sawing is close to Fredrik's heart and he saws at his summer cottage on Lungön, outside Härnösand, with one of our first chainsaws, the M2.

"When I had the opportunity to test drive the latest F2 at a live demo in May, I realized that the saw bench improved substantially and thus is more user-friendly," says Fredrik.

FREDRIK'S 2 FAVORITES



CH3 MULTIT-HEAD PLANER/MOULDER

You can say it was love at first sight when Fredrik tested the CH3 for the first time. His passion in wood and Logosol's machines are of course helpful as CEO at Logosol. Understanding the customers' needs and wishes is our most important priority, regardless of role at Logosol.



CHAINSAW F2+

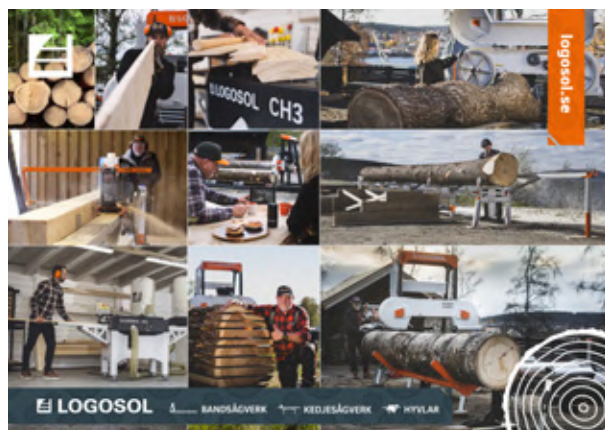
Fredrik has been a Logosol sawmill owner for a long time. At his summer cottage, he has completed both renovation and construction projects with an earlier model of the sawmill.

NEW! PRODUCT CATALOG 2023

DOWNLOAD OUR COMPLIMENTARY CATALOG

Logosol's new product catalog has been sent to the press and can be downloaded digitally.

Scan the QR code
to download the
product catalog!



NEW ON YOUTUBE

BUILT A HOUSE WITH F2

Don in Pennsylvania, USA, built his entire off-the-grid house in 8 months using only lumber sawn with his F2.

With timber from his land and the help of his friends, Don made the dream of his own off-the-grid house a reality.

Scan the QR-code to see
Don's video of the entire
process.





Full Speed Ahead in the Logosol Factory!

In-house production makes for increased safety & quality

A strong workforce increased the production volume during Logosol's strongest year of growth.

The winds of change have been blowing at Logosol's production department for the past 5 years. Before 2017, Logosol went from selling band saw-mills to producing its own. In 2019, a couple of new products were added. In 2021, Logosol launched new products, the Multi-Head Planer CH3 and the B1001 Hydraulic.

IMPRESSIVE INCREASE IN PRODUCTION

The record sales years of 2020 and 2021 became a challenge for production manager Alexander Ekman and his department.

"We have experienced an impressive increase in production volume, where bandsaw production has increased threefold, while staffing has only increased by a quarter," says Alexander.

STRONG TEAM

"It feels good to have a well-functioning team so that we can easily take on temporary increases in production rate but still maintain high quality. We have succeeded in fine-tuning the various stations in our production lines and maximized the efficiency of the processes we use," says Alexander.

MANY BANDSAWS ASSEMBLED

"Just today, we are actually assembling our 1000th band saw of one of the models. For the first time, we get

to assign a four-digit serial number. To seize the opportunity, the serial number will be written in gold ink. A special gift will also be sent to the lucky customer," reveals Alexander.

MATERIALS SECURED

During the pandemic, the global supply chain disruptions affected availability of materials.

"I feel proud of what we produce!"

"In the beginning, electronic components were missing; later, it was difficult to get a hold of certain motors and for a while some subcontractors had difficulty keeping up," says Alexander.

HIGH PRESSURE REMAINS

The now stabilized supply chain situation and extensive work to secure deliveries of components has facilitated careful planning and pacing of production. 2022 started with another record year in sales, so the production level remained challenging at an increased but manageable pace.

"All Logosol departments are growing and the fantastic effort from all departments makes it possible," says Alexander as he continues to work.



• Alexander Ekman has fine-tuned the production lines.



• Linda Östman lifts a bandsaw head from product line Step 2 for onward transport to Step 3.



• Alexander Kelldén is working on partial assembly for Step 1 in bandsaw production.



LOGOSOL PROMISE

LOGOSOL FLAGS FOR SWEDISH QUALITY



In the workshop at Logosol in the Swedish town Härnösand, sawmills and other machines are being assembled and then sent out all over the world. Alexander Ekman, production manager, is busy fitting a Swedish flag made of fabric to a band sawmill.

"Our skilled fitters feel proud of the products they assemble. The flag is a hallmark for all the products we make here in the workshop," says Alexander and clamps the flag between two plates.

"Even our components are laser cut and powder coated in Sweden, often in local workshops."

In recent years, Logosol has taken the assembly home to Härnösand to be able to control the qua-

lity and be close to the products all the way from idea to end customer.

Keep an eye out for the Swedish flag on your next Logosol product; then you know that you share your pride in the product with a bunch of equally proud fitters at Logosol.



NEW VIDEOS



EXPERT ADVICE ON PLANING KNIVES

Pelle Karlsson is one of Logosol's foremost planing knife experts. In this video, Pelle talks about our planing knives line and the TB90 system. He shows different standard profiles and shows us how to create and order specially-adapted planing knives. This is a video for anyone with an interest in planing and molding!



STEP BY STEP: SHARPEN YOUR BANDSAW BLADES WITH GRINDLUX

An educational video for those sharpening their bandsaw blades with the Grindlux.



WHY I BOUGHT MY SAWMILL FROM LOGOSOL

"Logosol has a good reputation. Better customer service and technical support than competitors."
Mats, Sweden

"Products with great features and modern design."
Brandon, Canada

"Logosol stands out in marketing terms. It's fun to take part in and be a part of! Logosol News, videos, catalogues, website, Instagram, Facebook etc."
Sara, Sweden

"A wide range. I can buy both my sawmill, drying kiln and planer from Logosol."
Klaus, Austria

"Frequent updates with new smart accessories and upgrades!"
Tim, USA

"For me, a piece of furniture shouldn't just sit there. It should invite questions. The finish and joints should entice you to feel the wood."

Alexander Wikström,
cabinetmaker
wikstrominterior.se



TAG #LOGOSOL

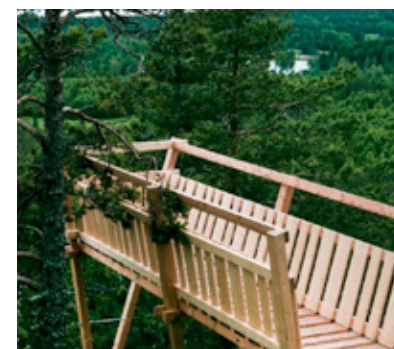
If you post photos on Facebook that may be inspiring to other Logosol customers, please tag your post **#Logosol** and **@logosol_portable_sawmills** to make it easier to find!



WOOD ART

ARKNAT HIGH COAST

ArkNat is a cross between architecture and nature, where architects from Scandinavia are invited to create unique "works of art" in nature that are reminiscent of traditional wind shelters. The creations are located along the hiking trail, Höga Kusten-leden. Pictures from **hogakusten.com**



ODDS & ENDS

news items with a feel for wood



WANTED!

CUSTOMER IMAGES & VIDEOS!

Please send us your pictures & videos. We're happy to share your projects on our social media and in our magazine Fresh Cut! We really enjoy finding out about building projects that you're working on with the help of our machines. Please send your photos or

videos and a few lines about your project to marknad@logosol.se together with your contact details. All published projects will be rewarded with a stylish Logosol cap.



GET A CAP!

INSPIRATION FOR THE WHOLE FAMILY



• Toasted marshmallows are perfect for a party in the forest.



• Hot chocolate is always a hit when out in the wild.

HOST A KID'S PARTY IN THE FOREST!

Having a party in the forest is an excellent idea and it is a perfect place to have a unique celebration. Here are some ideas:

- ✓ Decorate a party in the forest with garlands and balloons. Decorate the table with leaves, branches and string lights.
- ✓ Build a fire and let the children roast sausages and marshmallows.
- ✓ Make whistles together with the children.
- ✓ Bring glue, plastic googly eyes, and colored pencils as materials for crafting and let the children build their own forest creations.
- ✓ The forest is a perfect place for scavenger hunts!
- ✓ Make a flagged obstacle course using the forest's natural obstacles.
- ✓ Set up a party tent where the children can play and adults can relax with a beverage!



Snacks for the Forest Party

- Candy mushrooms, spiders and frogs
- Tree-shaped cookies made using a cookie cutter
- Licorice strips can be roots
- Acorns made of chocolate batter and mini macaroons
- Hedgehogs made of almond paste and chocolate sprinkles
- Chocolate roll cake with buttercream makes for nice tree stumps
- Grill marshmallows or bananas!



8 TIPS TO GET AN AWESOME SAWING SITE

- 1** Space makes things easier. It is good to have plenty of room for, for example, a tractor to be able to unload the wood on to the log table.
- 2** It is almost a must to have a good log table to keep the logs clean and to be able to easily roll the logs onto the log lifters.
- 3** Good tools to have on the saw site are a log winch to be able to lift logs, a log turner to be able to turn logs and a lifting hook to be able to get hold of the log and adjust it if necessary.
- 4** You also need spacer strips if you are going to air-dry the wood or lay-up the wood before any other form of drying. The spacer strips should be about 20 mm x 20 mm thick and as long as the width of the timber stack. The spacer strips must be dry, otherwise they can cause blue marks on the wood.
- 5** To make a good arrangement, you also need a good base for your sawn timber. It may be a good idea to start by laying out a tarpaulin to prevent growth around the wood, which can cause it to become damaged or not to dry. It is good to get up a few decimetres off the ground, by laying, for example, blocks or pallets laterally.
- 6** It may be advisable not to build the width of the wood pile too wide, 1 - 1.5 meters may be appropriate, so that it is easy to handle. For safety and practical reasons, the boards should not be stacked too high. It is an advantage to choose a place that is often exposed to the wind. A roof that protects against rain and sun can be placed at the top of the pile. Finally you get the benefit of that old roofing sheet you'd squirrelled away!
- 7** It is better if you put the core side up in the stack as it becomes steadier. It may be useful to add, for example, a layer of timber slabs or other weight on top of the roof, to reduce the risk of the material bowing and/or being skewed. Think about safety first and stack safely. Keep an air gap between the top layer and the roof.
- 8** Do not expose the timber ends to sunshine, as this leads to crack formation. You can use a plywood board as protection. It may also be useful to protect, e.g. valuable timber by painting the ends with a dense paint.



A warm welcome to the inspiring world of LOGOSOL

BECOME PART OF OUR WONDERFUL COMMUNITY

We have thousands of customers around the world who saw, plane and build using our machines. We love meeting you at our open houses, fairs and e-meetings when we broadcast live!

We love attending fairs and meeting our customers. This year, a lot of fun and exciting things are in store at Logosol. From our fairs, we will broadcast live from most fairs and have longer broadcasts from the largest fairs.

We love hearing from our customers around the world. When you leave your email address with us, we get the chance to tell you about offers, upcoming fairs, inspiring stories from customers and much more.

Join us. Read more on how to proceed here.



Join us now! You get all this:

- 1 INVITATIONS TO EVENTS**
In several markets, we have continuous events to show product news and other cool things!
- 2 SPECIFIC OFFERS**
Enjoy special offers and get product news
- 3 GET THE LOGOSOL NEWS-LETTER IN YOUR INBOX**
Read more about new products, tips and offers. We send approximately one email per month.
- 4 WIN LOGOSOL STUFF!**
Take part in fun competitions and win smart products and stylish Logosol merchandise.
- 5 PARTICIPATE IN LOGOSOL NEWS / SOCIAL MEDIA**
We want to see your projects so we can share them with all of our customers.
- 6 INFO ABOUT FAIRS & COURSES**
We invite you to come to our fairs and take courses in woodworking.

HOW TO!

You are welcome to leave your email address. It's easy to sign up. Scan the QR code or go to www.logosol.com and click on "My account" in the right hand corner. Remember to tick the box for the Logosol Newsletter so you don't miss anything.

Warm regards,
Team Logosol

PS. You can easily
unsubscribe to mailings
too.

